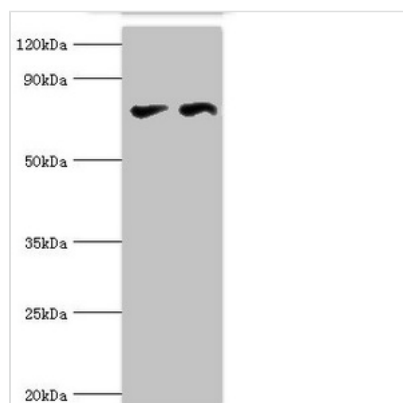




CTCF Antibody

Product Code	CSB-PA006138DSR2HU
Storage	Upon receipt, store at -20°C or -80°C. Avoid repeated freeze.
Uniprot No.	P49711
Immunogen	Recombinant Human Transcriptional repressor CTCF protein (1-260AA)
Raised In	Rabbit
Species Reactivity	Human
Tested Applications	ELISA, WB, IHC, ChIP; Recommended dilution: WB:1:1000-1:5000, IHC:1:20-1:200
Form	Liquid
Conjugate	Non-conjugated
Storage Buffer	PBS with 0.02% sodium azide, 50% glycerol, pH7.3.
Purification Method	Antigen Affinity Purified
Isotype	IgG
Clonality	Polyclonal
Alias	Transcriptional repressor CTCF (11-zinc finger protein) (CCCTC-binding factor) (CTCF-L1 paralog), CTCF
Immunogen Species	Homo sapiens (Human)
Research Area	Epigenetics and Nuclear Signaling
Target Names	CTCF

Image



Western blot

All lanes: Transcriptional repressor CTCF antibody at 6µg/ml

Lane 1: PC-3 whole cell lysate

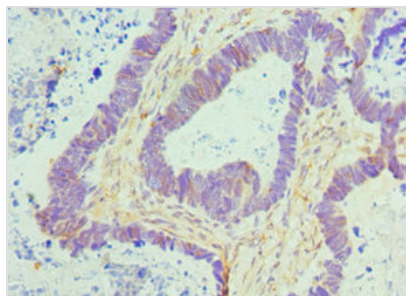
Lane 2: MCF-7 whole cell lysate

Secondary

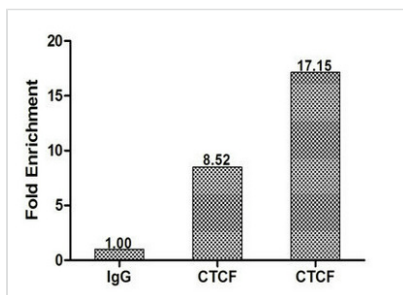
Goat polyclonal to rabbit IgG at 1/10000 dilution

Predicted band size: 83, 46 kDa

Observed band size: 83 kDa



Immunohistochemistry of paraffin-embedded human ovarian cancer using CSB-PA006138DSR2HU at dilution of 1:100



Chromatin Immunoprecipitation HeLa (1.2×10^6) were cross-linked with formaldehyde, sonicated, and immunoprecipitated with $4 \mu\text{g}$ anti-CTCF or a control normal rabbit IgG. The resulting ChIP DNA was quantified using real-time PCR with primers (CSB-PP006138HU) against the H19ICR promoter.

Usage

For Research Use Only. Not for use in diagnostic or therapeutic procedures.