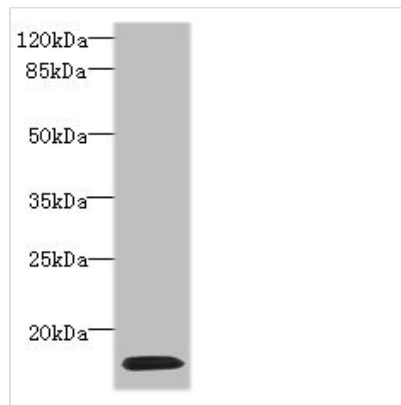




# HIST1H2AG Antibody

<b>Product Code</b>	CSB-PA010389LA01HU
<b>Storage</b>	Upon receipt, store at -20°C or -80°C. Avoid repeated freeze.
<b>Uniprot No.</b>	P0C0S8
<b>Immunogen</b>	Recombinant Human Histone H2A type 1 protein (2-130AA)
<b>Raised In</b>	Rabbit
<b>Species Reactivity</b>	Human
<b>Tested Applications</b>	ELISA, WB, IHC, IF, ChIP; Recommended dilution: WB:1:1000-1:5000, IHC:1:20-1:200, IF:1:50-1:200
<b>Form</b>	Liquid
<b>Conjugate</b>	Non-conjugated
<b>Storage Buffer</b>	Preservative: 0.03% Proclin 300 Constituents: 50% Glycerol, 0.01M PBS, PH 7.4
<b>Purification Method</b>	>95%, Protein G purified
<b>Isotype</b>	IgG
<b>Clonality</b>	Polyclonal
<b>Alias</b>	Histone H2A type 1 (H2A.1) (Histone H2A/ptl), HIST1H2AG; HIST1H2AI; HIST1H2AK; HIST1H2AL; HIST1H2AM, H2AFP; H2AFC; H2AFD; H2AFI; H2AFN
<b>Immunogen Species</b>	Homo sapiens (Human)
<b>Research Area</b>	Others
<b>Target Names</b>	HIST1H2AG

## Image



Western blot

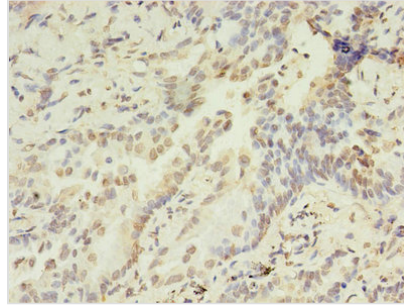
All lanes: HIST1H2AG antibody at 4µg/ml + HL60 whole cell lysate

Secondary

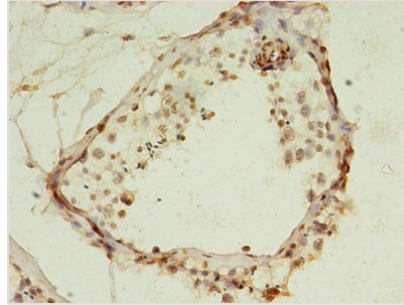
Goat polyclonal to rabbit IgG at 1/10000 dilution

Predicted band size: 15 kDa

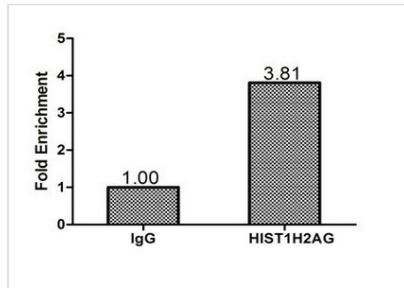
Observed band size: 15 kDa



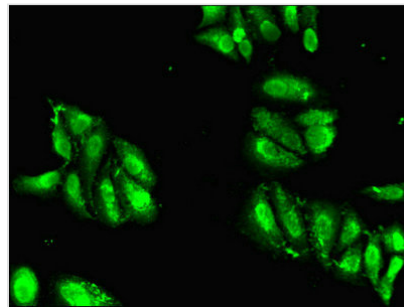
Immunohistochemistry of paraffin-embedded human lung cancer using CSB-PA010389LA01HU at dilution of 1:100



Immunohistochemistry of paraffin-embedded human testis tissue using CSB-PA010389LA01HU at dilution of 1:100



Chromatin Immunoprecipitation  
Hela( $1.2 \times 10^6$ ) were cross-linked with formaldehyde, sonicated, and immunoprecipitated with  $4\mu\text{g}$  anti-HIST1H2AG or a control normal rabbit IgG. The resulting ChIP DNA was quantified tissue using real-time PCR with primers(CSB-PP010389HU) against the PGK1 promoter.



Immunofluorescent analysis of HeLa cells using CSB-PA010389LA01HU at dilution of 1:100 and Alexa Fluor 488-conjugated AffiniPure Goat Anti-Rabbit IgG(H+L)