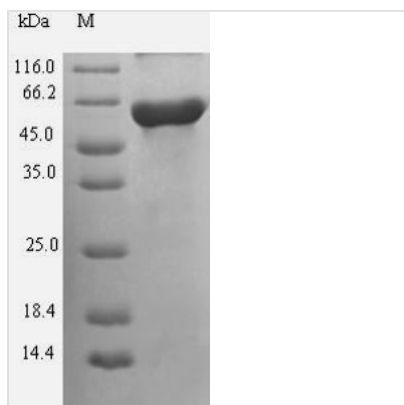




Recombinant Human Guanine nucleotide-binding protein G (s) subunit alpha isoforms short (GNAS)

Product Code	CSB-EP352389HU
Relevance	Guanine nucleotide-binding proteins (G proteins) function as transducers in numerous signaling pathways controlled by G protein-coupled receptors (GPCRs) . Signaling involves the activation of adenylyl cyclases, resulting in increased levels of the signaling molecule cAMP . GNAS functions downstream of several GPCRs, including beta-adrenergic receptors . Stimulates the Ras signaling pathway via RAPGEF2 .
Abbreviation	Recombinant Human GNAS protein
Storage	The shelf life is related to many factors, storage state, buffer ingredients, storage temperature and the stability of the protein itself. Generally, the shelf life of liquid form is 6 months at -20°C/-80°C. The shelf life of lyophilized form is 12 months at -20°C/-80°C.
Uniprot No.	P63092
Alias	Adenylate cyclase-stimulating G alpha protein
Product Type	Recombinant Protein
Immunogen Species	Homo sapiens (Human)
Purity	Greater than 90% as determined by SDS-PAGE.
Sequence	MGCLGNSKTEDQRNEEKAQREANKKIEKQLQKDKQVYRATHRLLLLGAGESG KSTIVKQMRILHVNGFNNGEGGEDPQAARSNSDGEKATKVQDIKNNLKEAIETI VAAMSNLVPPVELANPENQFRVDYILSVMNVPDFDFPPEFYEHAKALWEDEG VRACYERSNEYQLIDCAQYFLDKIDVIKQADYVPSDQDLLRCRVLTSGIFETKF QVDKVNFMFDVGGQRDERRKWIQCFNDVTAIIFVVASSSYNNMVIREDNQTN RLQEALNLFKSIWNNRWLRTISVILFLNKQDLLAEKVLGKSKIEDYFPEFARYT TPEDATPEPGEDPRVTRAKYFIRDEFRLISTASGDGRHYCYPHFTCAVDTENIR RVFNDCRDIIQRMHLRQYELL
Research Area	Signal Transduction
Source	E.coli
Target Names	GNAS
Expression Region	1-394aa
Notes	Repeated freezing and thawing is not recommended. Store working aliquots at 4°C for up to one week.
Tag Info	N-terminal 6xHis-SUMO-tagged
Mol. Weight	61.7kDa
Protein Length	Full Length
Image	



(Tris-Glycine gel) Discontinuous SDS-PAGE (reduced) with 5% enrichment gel and 15% separation gel.

Reconstitution

We recommend that this vial be briefly centrifuged prior to opening to bring the contents to the bottom. Please reconstitute protein in deionized sterile water to a concentration of 0.1-1.0 mg/mL. We recommend to add 5-50% of glycerol (final concentration) and aliquot for long-term storage at -20°C/-80°C. Our default final concentration of glycerol is 50%. Customers could use it as reference.

Shelf Life

The shelf life is related to many factors, storage state, buffer ingredients, storage temperature and the stability of the protein itself. Generally, the shelf life of liquid form is 6 months at -20°C/-80°C. The shelf life of lyophilized form is 12 months at -20°C/-80°C.