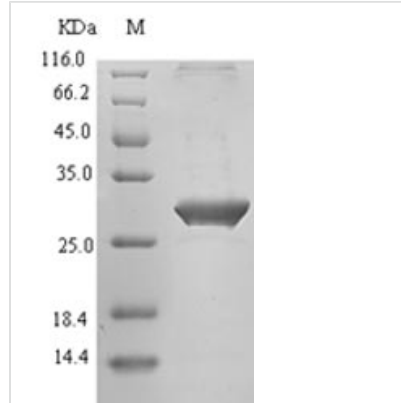




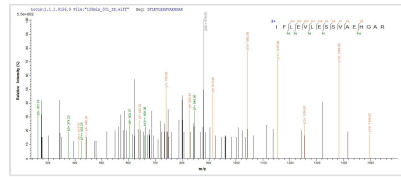
# Recombinant Human T-cell immunoreceptor with Ig and ITIM domains (TIGIT), partial

<b>Product Code</b>	CSB-EP675446HU
<b>Relevance</b>	Binds with high affinity to the poliovirus receptor (PVR) which causes increased secretion of IL10 and decreased secretion of IL12B and suppresses T-cell activation by promoting the generation of mature immunoregulatory dendritic cells.
<b>Abbreviation</b>	Recombinant Human TIGIT protein, partial
<b>Storage</b>	The shelf life is related to many factors, storage state, buffer ingredients, storage temperature and the stability of the protein itself. Generally, the shelf life of liquid form is 6 months at -20°C/-80°C. The shelf life of lyophilized form is 12 months at -20°C/-80°C.
<b>Uniprot No.</b>	Q495A1
<b>Product Type</b>	Recombinant Proteins
<b>Immunogen Species</b>	Homo sapiens (Human)
<b>Purity</b>	Greater than 90% as determined by SDS-PAGE.
<b>Sequence</b>	MMTGTIETTGNISAEKGGSIILQCHLSSTTAQVTQVNWEQQDQLLAICNADLG WHISPSFKDRVAPGPGGLGLTLQSLTVNDTGEYFCIYHTYPDGTYTGRIFLEVLE SSVAEHGARFQIP
<b>Research Area</b>	Immunology
<b>Source</b>	E.coli
<b>Target Names</b>	TIGIT
<b>Expression Region</b>	22-141aa
<b>Notes</b>	Repeated freezing and thawing is not recommended. Store working aliquots at 4°C for up to one week.
<b>Tag Info</b>	N-terminal 6xHis-SUMO-tagged
<b>Mol. Weight</b>	26.0 kDa
<b>Protein Length</b>	Extracellular Domain

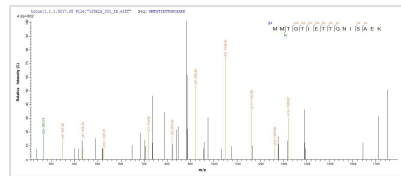
Image



(Tris-Glycine gel) Discontinuous SDS-PAGE (reduced) with 5% enrichment gel and 15% separation gel.



Based on the SEQUEST from database of E.coli host and target protein, the LC-MS/MS Analysis result of CSB-EP675446HU could indicate that this peptide derived from E.coli-expressed Homo sapiens (Human) TIGIT.



Based on the SEQUEST from database of E.coli host and target protein, the LC-MS/MS Analysis result of CSB-EP675446HU could indicate that this peptide derived from E.coli-expressed Homo sapiens (Human) TIGIT.

**Shelf Life**

The shelf life is related to many factors, storage state, buffer ingredients, storage temperature and the stability of the protein itself.

Generally, the shelf life of liquid form is 6 months at -20°C/-80°C. The shelf life of lyophilized form is 12 months at -20°C/-80°C.