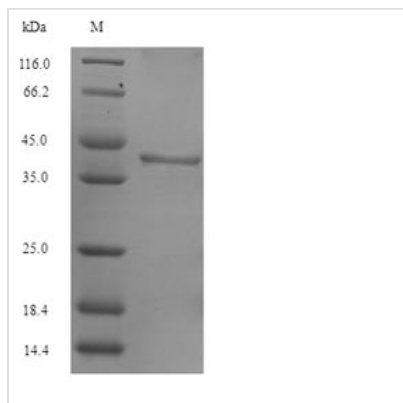




# Recombinant Arabidopsis thaliana Sucrose-phosphate synthase 1 (SPS1), partial

<b>Product Code</b>	CSB-EP856727DOA
<b>Relevance</b>	Plays a major role in photosynthetic sucrose synthesis by catalyzing the rate-limiting step of sucrose biosynthesis from UDP-glucose and fructose- 6-phosphate. Involved in the regulation of carbon partitioning in the leaves of plants. May regulate the synthesis of sucrose and therefore play a major role as a limiting factor in the export of photoassimilates out of the leaf. Plays a role for sucrose availability that is essential for plant growth and fiber elongation. Required for nectar secretion.
<b>Abbreviation</b>	Recombinant Mouse-ear cress SPS1 protein, partial
<b>Storage</b>	The shelf life is related to many factors, storage state, buffer ingredients, storage temperature and the stability of the protein itself. Generally, the shelf life of liquid form is 6 months at -20°C/-80°C. The shelf life of lyophilized form is 12 months at -20°C/-80°C.
<b>Uniprot No.</b>	Q94BT0
<b>Alias</b>	Sucrose-phosphate synthase 1F Short name: AtSPS1F Sucrose-phosphate synthase 5.1 Short name: AtSPS5.1 UDP-glucose-fructose-phosphate glucosyltransferase
<b>Product Type</b>	Recombinant Protein
<b>Immunogen Species</b>	Arabidopsis thaliana (Mouse-ear cress)
<b>Purity</b>	≥ 90% as determined by SDS-PAGE.
<b>Sequence</b>	VVIALDFDGEEDTLEATKRILDAVEKERAEGSVGFILSTSLTISEVQSFLVSGGL NPNDFDAFICNSGSDLHYTSLNEDGPFVDFYHSHIEYRWGGEGRLRKTLLIR WASSLNEKKADNDEQIVTLAEHLSTDYCYTFTVKKPAAVPPVRELKLLRIQAL RCHVVYSQNGTRINVIPVLASRIQALRYLFVRWGIDMAKMAVFGESGDTDYE GLLGGLHKSVVLK
<b>Research Area</b>	Signal Transduction
<b>Source</b>	E.coli
<b>Target Names</b>	SPS1
<b>Expression Region</b>	768-995aa
<b>Notes</b>	Repeated freezing and thawing is not recommended. Store working aliquots at 4°C for up to one week.
<b>Tag Info</b>	N-terminal 6xHis-SUMO-tagged
<b>Mol. Weight</b>	41.5kDa
<b>Protein Length</b>	Partial
<b>Image</b>	



(Tris-Glycine gel) Discontinuous SDS-PAGE (reduced) with 5% enrichment gel and 15% separation gel.

### Reconstitution

We recommend that this vial be briefly centrifuged prior to opening to bring the contents to the bottom. Please reconstitute protein in deionized sterile water to a concentration of 0.1-1.0 mg/mL. We recommend to add 5-50% of glycerol (final concentration) and aliquot for long-term storage at -20°C/-80°C. Our default final concentration of glycerol is 50%. Customers could use it as reference.

### Shelf Life

The shelf life is related to many factors, storage state, buffer ingredients, storage temperature and the stability of the protein itself. Generally, the shelf life of liquid form is 6 months at -20°C/-80°C. The shelf life of lyophilized form is 12 months at -20°C/-80°C.