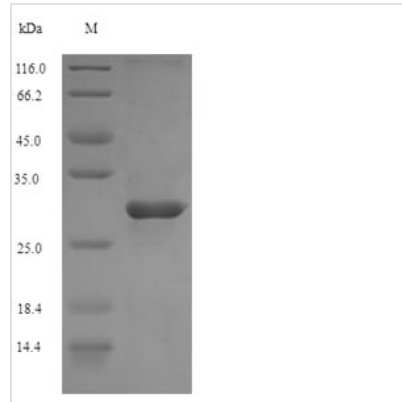




Recombinant Mouse Complement receptor type 2 (Cr2), partial

Product Code	CSB-EP005934MO
Relevance	Receptor for complement C3d. Participates in B lymphocytes activation.
Abbreviation	Recombinant Mouse Cr2 protein, partial
Storage	The shelf life is related to many factors, storage state, buffer ingredients, storage temperature and the stability of the protein itself. Generally, the shelf life of liquid form is 6 months at -20°C/-80°C. The shelf life of lyophilized form is 12 months at -20°C/-80°C.
Uniprot No.	P19070
Alias	Complement C3d receptor CD_antigen: CD21
Product Type	Recombinant Protein
Immunogen Species	Mus musculus (Mouse)
Purity	≥ 90% as determined by SDS-PAGE.
Sequence	LYGNEVSYECDEGFYLLGEKSLQCVNDSKGHGWSGPPQCLQSSPLTHCP DPEVKHGYKLNKTHSAFSHNDIVHFVCNQQGFIMNGSHLIRCHTNNTWLPGVPT CIRKASLGCQSPSTIPNGNHTGGSARFPPGMSVMYSCYQGFLMAGEARLICT HEGTWSQPPPFCKEVNCSFPEDTNGIQKGFQPGKTYRFGATVTLECEDGYTL EGSPQSQCQDDSQWNPPLALCKYRRW
Research Area	Immunology
Source	E.coli
Target Names	Cr2
Expression Region	729-963aa
Notes	Repeated freezing and thawing is not recommended. Store working aliquots at 4°C for up to one week.
Tag Info	N-terminal 6xHis-tagged
Mol. Weight	30.0kDa
Protein Length	Partial
Image	



(Tris-Glycine gel) Discontinuous SDS-PAGE (reduced) with 5% enrichment gel and 15% separation gel.

Reconstitution

We recommend that this vial be briefly centrifuged prior to opening to bring the contents to the bottom. Please reconstitute protein in deionized sterile water to a concentration of 0.1-1.0 mg/mL. We recommend to add 5-50% of glycerol (final concentration) and aliquot for long-term storage at -20°C/-80°C. Our default final concentration of glycerol is 50%. Customers could use it as reference.

Shelf Life

The shelf life is related to many factors, storage state, buffer ingredients, storage temperature and the stability of the protein itself. Generally, the shelf life of liquid form is 6 months at -20°C/-80°C. The shelf life of lyophilized form is 12 months at -20°C/-80°C.