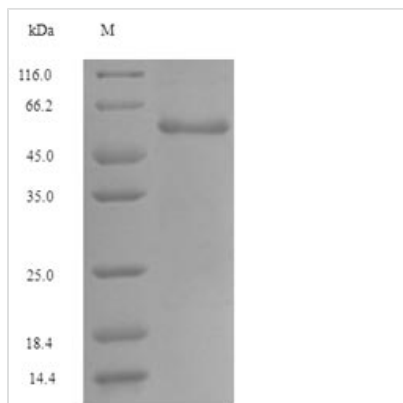




Recombinant Human Glutaminase kidney isoform, mitochondrial (GLS), partial

Product Code	CSB-EP009528HU(F)
Relevance	Catalyzes the first reaction in the primary pathway for the renal catabolism of glutamine. Plays a role in maintaining acid-base homeostasis. Regulates the levels of the neurotransmitter glutamate in the brain. Isoform 2 lacks catalytic activity.
Abbreviation	Recombinant Human GLS protein, partial
Storage	The shelf life is related to many factors, storage state, buffer ingredients, storage temperature and the stability of the protein itself. Generally, the shelf life of liquid form is 6 months at -20°C/-80°C. The shelf life of lyophilized form is 12 months at -20°C/-80°C.
Uniprot No.	O94925
Alias	K-glutaminase L-glutamine amidohydrolase
Product Type	Recombinant Protein
Immunogen Species	Homo sapiens (Human)
Purity	≥ 90% as determined by SDS-PAGE.
Sequence	YVGFSNATFQSERESGDRNFAIGYYLKEKKCFPEGTDMVGILDFYFQLCSIEVT CESASVMAATLANGGFPCPITGERVLSPEAVRNTLSLMHSCGMYDFSGQFAFH VGLPAKSGVAGGILLVVPNVMGMMCWSPPLDKMGNVKGIFCHDLVSLCNF HNYDNLRHFAKLDPRREGGDQRVKSVINLLFAAYTGDVSALRRFALSAMDM EQRDYDSRTALHVAAAEGHVEVVKFLLACKVNPFPKDRWNNTPMDEALHFG HHDVFKILQEYQVQYTPQGSDNGKENQTVHKNLDGLL
Research Area	Metabolism
Source	E.coli
Target Names	GLS
Expression Region	370-669aa
Notes	Repeated freezing and thawing is not recommended. Store working aliquots at 4°C for up to one week.
Tag Info	N-terminal GST-tagged
Mol. Weight	60.4kDa
Protein Length	Partial
Image	



(Tris-Glycine gel) Discontinuous SDS-PAGE (reduced) with 5% enrichment gel and 15% separation gel.

Reconstitution

We recommend that this vial be briefly centrifuged prior to opening to bring the contents to the bottom. Please reconstitute protein in deionized sterile water to a concentration of 0.1-1.0 mg/mL. We recommend to add 5-50% of glycerol (final concentration) and aliquot for long-term storage at -20°C/-80°C. Our default final concentration of glycerol is 50%. Customers could use it as reference.

Shelf Life

The shelf life is related to many factors, storage state, buffer ingredients, storage temperature and the stability of the protein itself. Generally, the shelf life of liquid form is 6 months at -20°C/-80°C. The shelf life of lyophilized form is 12 months at -20°C/-80°C.