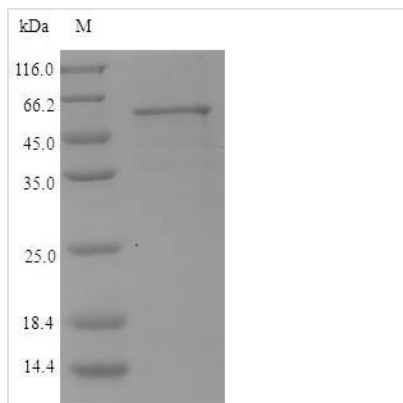


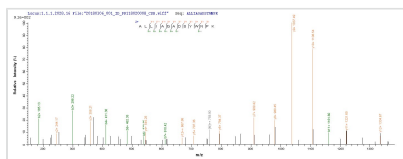


Recombinant Porphyromonas gingivalis Lys- gingipain (kgp), partial

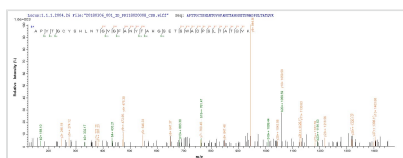
Product Code	CSB-EP464342EXZ
Relevance	Cysteine proteinase with a strong preference for substrates with Lys in the P1 position. Hydrolyzes bovine hemoglobin, bovine serum albumin, casein, human placental type I collagen and human IgA and IgG. Disrupts the functions of polymorphonuclear leukocytes. May act as a virulence factor in the development of periodontal disease. Involved in the coaggregation of P.gingivalis with other oral bacteria.
Abbreviation	Recombinant Porphyromonas gingivalis kgp protein, partial
Storage	The shelf life is related to many factors, storage state, buffer ingredients, storage temperature and the stability of the protein itself. Generally, the shelf life of liquid form is 6 months at -20°C/-80°C. The shelf life of lyophilized form is 12 months at -20°C/-80°C.
Uniprot No.	B2RLK2
Alias	Lysine-specific cysteine proteinase Kgp
Product Type	Recombinant Protein
Immunogen Species	Porphyromonas gingivalis (strain ATCC 33277 / DSM 20709 / JCM 12257)
Purity	Greater than 90% as determined by SDS-PAGE.
Sequence	DVYTDHGDLYNTPVRMLVVAGAKFKEALKPWLTWKAQKGFYLDVHYTDEAEV GTTNASIKAFIHKKYNDGLAASAAPVFLALVGD TDVISGEKGGKTKKVTDLIYS AVDGDYFPEMYTFRMSASSPEELTNIIDKVL MYEKATMPDKSYLEKALLIAGAD SYWNP KIGQQTIKYAVQYYYNQDHGYTDVYSYPKAPYTG CYSHLNTGVGFAN YTAHGSETSWADPSLTATQVKALTNKDKYFLAIGNCCVTAQFDYPQPCFGEV MTRVKEKGAYAYIGSSPNSYWGEDYYWSV GANAVFGVQPTFEGTSMGSYDA TFLEDSYNTVNSIMWAGNLAATHAGNIGNITHIGAHYYWEAYHVLGDGSVM
Research Area	Others
Source	E.coli
Target Names	kgp
Expression Region	229-594aa
Notes	Repeated freezing and thawing is not recommended. Store working aliquots at 4°C for up to one week.
Tag Info	N-terminal 6xHis-SUMO-tagged
Mol. Weight	56.6kDa
Protein Length	Partial
Image	



(Tris-Glycine gel) Discontinuous SDS-PAGE (reduced) with 5% enrichment gel and 15% separation gel.



Based on the SEQUEST from database of E.coli host and target protein, the LC-MS/MS Analysis result of CSB-EP464342EXZ could indicate that this peptide derived from E.coli-expressed Porphyromonas gingivalis (strain ATCC 33277 / DSM 20709 / JCM 12257) kgp.



Based on the SEQUEST from database of E.coli host and target protein, the LC-MS/MS Analysis result of CSB-EP464342EXZ could indicate that this peptide derived from E.coli-expressed Porphyromonas gingivalis (strain ATCC 33277 / DSM 20709 / JCM 12257) kgp.

Reconstitution

We recommend that this vial be briefly centrifuged prior to opening to bring the contents to the bottom. Please reconstitute protein in deionized sterile water to a concentration of 0.1-1.0 mg/mL. We recommend to add 5-50% of glycerol (final concentration) and aliquot for long-term storage at -20°C/-80°C. Our default final concentration of glycerol is 50%. Customers could use it as reference.

Shelf Life

The shelf life is related to many factors, storage state, buffer ingredients, storage temperature and the stability of the protein itself.

Generally, the shelf life of liquid form is 6 months at -20°C/-80°C. The shelf life of lyophilized form is 12 months at -20°C/-80°C.