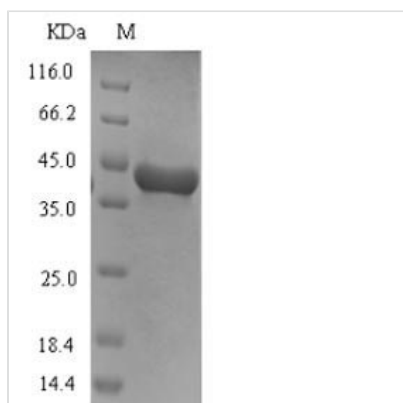




Recombinant Dog Arginine esterase

Product Code	CSB-EP362734DO
Relevance	This serine protease is found in dog seminal plasma, its exact physiological function is not known. Preferential cleavage of Arg- -Xaa bonds in small molecule substrates. Highly selective action to release kallidin (lysyl-bradykinin) from kininogen involves hydrolysis of Met- -Xaa or Leu- -Xaa.
Abbreviation	Recombinant Dog Arginine esterase protein
Storage	The shelf life is related to many factors, storage state, buffer ingredients, storage temperature and the stability of the protein itself. Generally, the shelf life of liquid form is 6 months at -20°C/-80°C. The shelf life of lyophilized form is 12 months at -20°C/-80°C.
Uniprot No.	P09582
Product Type	Recombinant Protein
Immunogen Species	Canis lupus familiaris (Dog) (Canis familiaris)
Purity	≥ 90% as determined by SDS-PAGE.
Sequence	IIGGRECLKNSQPWQVAVYHNGEFACGGVLVNPEWVLTAAHCANSNCEVWL GRHNLSESEDEGQLVQVRKSFHPLYKTKVPRAVIRPGEDRSHDLMLLHLEEP AKITKAVRVMDLPKKEPPLGSTCYVSGWGSTDPEIFHPGSLQCVDLKLLSNN QCAKVYTQKVTKFMLCAGVLEGKKDTCKGDSGGPLICDGELVGITSWGATPC GKPQMPSLYTRVMPHLMWIKDTMKANT
Research Area	Others
Source	E.coli
Expression Region	25-260aa
Notes	Repeated freezing and thawing is not recommended. Store working aliquots at 4°C for up to one week.
Tag Info	N-terminal 6xHis-SUMO-tagged
Mol. Weight	42.0kDa
Protein Length	Full Length of Mature Protein

Image



(Tris-Glycine gel) Discontinuous SDS-PAGE (reduced) with 5% enrichment gel and 15% separation gel.



Reconstitution

We recommend that this vial be briefly centrifuged prior to opening to bring the contents to the bottom. Please reconstitute protein in deionized sterile water to a concentration of 0.1-1.0 mg/mL. We recommend to add 5-50% of glycerol (final concentration) and aliquot for long-term storage at -20°C/-80°C. Our default final concentration of glycerol is 50%. Customers could use it as reference.

Shelf Life

The shelf life is related to many factors, storage state, buffer ingredients, storage temperature and the stability of the protein itself.

Generally, the shelf life of liquid form is 6 months at -20°C/-80°C. The shelf life of lyophilized form is 12 months at -20°C/-80°C.