



# Recombinant Mouse Platelet-derived growth factor D (Pdgfd)

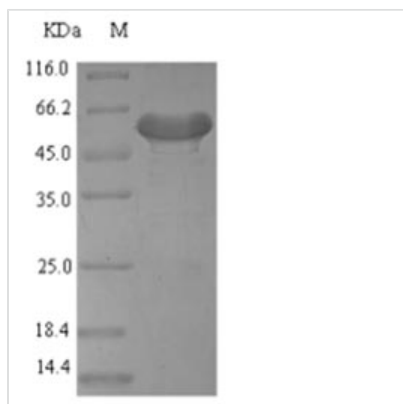
<b>Product Code</b>	CSB-EP852889MO
<b>Relevance</b>	Growth factor that plays an essential role in the regulation of embryonic development, cell proliferation, cell migration, survival and chemotaxis. Potent mitogen for cells of mesenchymal origin. Plays an important role in wound healing (By similarity). Has oncogenic potential and can induce tumor formation. Induces macrophage recruitment, increased interstitial pressure, and blood vessel maturation during angiogenesis. Can initiate events that lead to a mesangial proliferative glomerulonephritis, including influx of monocytes and macrophages and production of Extracellular domain matrix.
<b>Abbreviation</b>	Recombinant Mouse Pdgfd protein
<b>Storage</b>	The shelf life is related to many factors, storage state, buffer ingredients, storage temperature and the stability of the protein itself. Generally, the shelf life of liquid form is 6 months at -20°C/-80°C. The shelf life of lyophilized form is 12 months at -20°C/-80°C.
<b>Uniprot No.</b>	Q925I7
<b>Alias</b>	Spinal cord-derived growth factor B Short name: SCDGF-B Cleaved into the following 2 chains: Platelet-derived growth factor D, latent form Short name: PDGFD latent form Platelet-derived growth factor D, receptor-binding form Short name: PDGFD receptor-binding form
<b>Product Type</b>	Recombinant Protein
<b>Immunogen Species</b>	Mus musculus (Mouse)
<b>Purity</b>	Greater than 90% as determined by SDS-PAGE.
<b>Sequence</b>	TPQRASIKALRNANLRRDESNHLTDLYQREENIQVTSNGHVQSPRFPNSYPRN LLLTWWLRSQEKTRIQLSFDHQFGLLEEAENDICRYDFVEVEEVSESSVVRGR WCGHKEIPRITSRTNQIKITFKSDDYFVAKPGFKIYYSFVEDFQPEAASETNW ESVTSSFSGVSYHSPSITDPTLTADALDKTVAEFDTVEDLLKHFNPVSWQDDL ENLYLDTPHYRGRSYHDRKSKVDLDRLNDDVKRYSCTPRNHSVNLREELKLT NAVFFPRCLLVQRCGGNCGCGTVNWKSCCTCSSGKTVKKYHEVLKFEPGHFK RRGKAKNMALVDIQLDHHERCDCICSSRPPR
<b>Research Area</b>	Others
<b>Source</b>	E.coli
<b>Target Names</b>	Pdgfd
<b>Expression Region</b>	24-370aa
<b>Notes</b>	Repeated freezing and thawing is not recommended. Store working aliquots at 4°C for up to one week.
<b>Tag Info</b>	N-terminal 6xHis-SUMO-tagged



**Mol. Weight** 56.2kDa

**Protein Length** Full Length of Mature Protein

**Image**



(Tris-Glycine gel) Discontinuous SDS-PAGE (reduced) with 5% enrichment gel and 15% separation gel.

**Reconstitution**

We recommend that this vial be briefly centrifuged prior to opening to bring the contents to the bottom. Please reconstitute protein in deionized sterile water to a concentration of 0.1-1.0 mg/mL. We recommend to add 5-50% of glycerol (final concentration) and aliquot for long-term storage at -20°C/-80°C. Our default final concentration of glycerol is 50%. Customers could use it as reference.

**Shelf Life**

The shelf life is related to many factors, storage state, buffer ingredients, storage temperature and the stability of the protein itself. Generally, the shelf life of liquid form is 6 months at -20°C/-80°C. The shelf life of lyophilized form is 12 months at -20°C/-80°C.