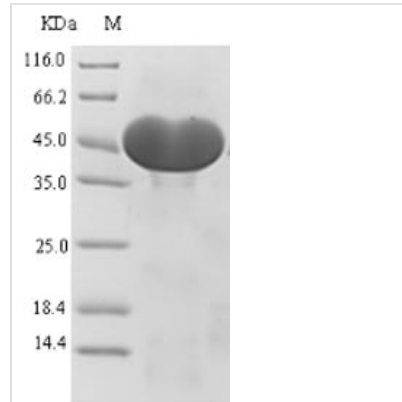




Recombinant Human ATP-citRate synthase (ACLY), partial

Product Code	CSB-EP001158HU
Relevance	ATP citrate-lyase is the primary enzyme responsible for the synthesis of cytosolic acetyl-CoA in many tissues. Has a central role in de novo lipid synthesis. In nervous tissue it may be involved in the biosynthesis of acetylcholine.
Abbreviation	Recombinant Human ACLY protein, partial
Storage	The shelf life is related to many factors, storage state, buffer ingredients, storage temperature and the stability of the protein itself. Generally, the shelf life of liquid form is 6 months at -20°C/-80°C. The shelf life of lyophilized form is 12 months at -20°C/-80°C.
Uniprot No.	P53396
Alias	ATP-citrate (pro-S-)-lyase Short name:ACL Citrate cleavage enzyme
Product Type	Recombinant Protein
Immunogen Species	Homo sapiens (Human)
Purity	Greater than 90% as determined by SDS-PAGE.
Sequence	KAISEQTGKELLYKFICTTSAIQNRFKYARVTPDTDWARLLQDHPWLLSQNLVV KPDQLIKRRGKLGVLGVNLTLDGVKSWLKPRLGQEATVGKATGFLKNFLIEPFV PHSQAEFVYVCYATREGDYVLFHHEGGVDVGDVDAKAQKLLVGVDEKLNPE DIKKHLLVHAPEDKKEILASFISGLFNFYEDLYFTYLEINPLVVTKDGVYVLDLAA KVDATADYICKVKWGDIEFPFPGREAYPEEAYIADLDAKSGASLK
Research Area	Metabolism
Source	E.coli
Target Names	ACLY
Expression Region	4-265aa
Notes	Repeated freezing and thawing is not recommended. Store working aliquots at 4°C for up to one week.
Tag Info	N-terminal 6xHis-SUMO-tagged
Mol. Weight	45.5kDa
Protein Length	Partial
Image	



(Tris-Glycine gel) Discontinuous SDS-PAGE (reduced) with 5% enrichment gel and 15% separation gel.

Reconstitution

We recommend that this vial be briefly centrifuged prior to opening to bring the contents to the bottom. Please reconstitute protein in deionized sterile water to a concentration of 0.1-1.0 mg/mL. We recommend to add 5-50% of glycerol (final concentration) and aliquot for long-term storage at -20°C/-80°C. Our default final concentration of glycerol is 50%. Customers could use it as reference.

Shelf Life

The shelf life is related to many factors, storage state, buffer ingredients, storage temperature and the stability of the protein itself. Generally, the shelf life of liquid form is 6 months at -20°C/-80°C. The shelf life of lyophilized form is 12 months at -20°C/-80°C.