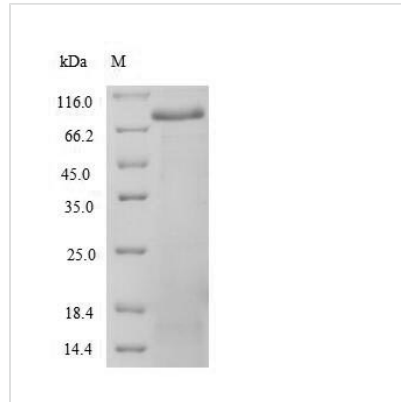




Recombinant Human Spectrin alpha chain, non-erythrocytic 1 (SPTAN1), partial

Product Code	CSB-EP022633HU
Relevance	Fodrin, which seems to be involved in secretion, interacts with calmodulin in a calcium-dependent manner and is thus candidate for the calcium-dependent movement of the cytoskeleton at the membrane.
Abbreviation	Recombinant Human SPTAN1 protein, partial
Storage	The shelf life is related to many factors, storage state, buffer ingredients, storage temperature and the stability of the protein itself. Generally, the shelf life of liquid form is 6 months at -20°C/-80°C. The shelf life of lyophilized form is 12 months at -20°C/-80°C.
Uniprot No.	Q13813
Alias	Alpha-II spectrin Fodrin alpha chain Spectrin, non-erythroid alpha subunit
Product Type	Recombinant Protein
Immunogen Species	Homo sapiens (Human)
Purity	≥ 90% as determined by SDS-PAGE.
Sequence	MDPSGVKVLETAEDIQERRQQVLD RYHRFKELSTLRRQKLEDSYRFQFFQRD AEELEKWIQEKLQIASDENYKDPTNLQGKLQKHQAFEAEVQANSGAIVKLD ETGNLMISEGHFASSETIRTRLMELHRQWELLEKMRKGIKLLQAQKLVQYL RECEDVMDWINDKEAIVTSEELGQDLEHVEVLQKKFEEFQTDMAAHEERV NEVNQFAAKLIQEQHPHEELIKTKQDEVNAAWQRLKGLALQRQGKLF GAAEVQRFNRDVDETISWIKEKEQLMASDDFGRDLASVQALLRKHEGLER DLAALEDKVKALCAEADRLQQSHPLSATQIQVKREELITNWEQIRTLAAER HARLNDSYRLQRFLADFRDLTSWVTEMKALINADELASDVAGAEALLDRH QECHKGEIDAHEDSFKSADESGQALLAAGHYASDEVREKLTVLSEERA ALLELWELRRQQYEQCMDLQLFYRDTAQVDNWMKQEAFLNEDLGDSL SVEALLKKHEDFEKSLSAQEEKITALDEFATKLIQNNHYAMEDVATRRD ALLSRRNALHERAMRRRAQLADSFHLQQFFR
Research Area	Signal Transduction
Source	E.coli
Target Names	SPTAN1
Expression Region	1-580aa
Notes	Repeated freezing and thawing is not recommended. Store working aliquots at 4°C for up to one week.
Tag Info	N-terminal 6xHis-SUMO-tagged
Mol. Weight	83.8kDa
Protein Length	Partial
Image	



(Tris-Glycine gel) Discontinuous SDS-PAGE (reduced) with 5% enrichment gel and 15% separation gel.

Reconstitution

We recommend that this vial be briefly centrifuged prior to opening to bring the contents to the bottom. Please reconstitute protein in deionized sterile water to a concentration of 0.1-1.0 mg/mL. We recommend to add 5-50% of glycerol (final concentration) and aliquot for long-term storage at -20°C/-80°C. Our default final concentration of glycerol is 50%. Customers could use it as reference.

Shelf Life

The shelf life is related to many factors, storage state, buffer ingredients, storage temperature and the stability of the protein itself. Generally, the shelf life of liquid form is 6 months at -20°C/-80°C. The shelf life of lyophilized form is 12 months at -20°C/-80°C.