

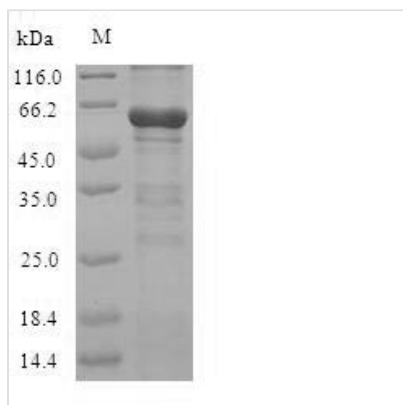


Recombinant Mouse Cystathionine beta-synthase (Cbs)

Product Code	CSB-EP849665MO
Relevance	Only known pyridoxal phosphate-dependent enzyme that contains heme. Important regulator of hydrogen sulfide, especially in the brain, utilizing cysteine instead of serine to catalyze the formation of hydrogen sulfide. Hydrogen sulfide is a gastratransmitter with signaling and cytoprotective effects such as acting as a neuromodulator in the brain to protect neurons against hypoxic injury
Abbreviation	Recombinant Mouse Cbs protein
Storage	The shelf life is related to many factors, storage state, buffer ingredients, storage temperature and the stability of the protein itself. Generally, the shelf life of liquid form is 6 months at -20°C/-80°C. The shelf life of lyophilized form is 12 months at -20°C/-80°C.
Uniprot No.	Q91WT9
Alias	Beta-thionase Serine sulfhydrase
Product Type	Recombinant Protein
Immunogen Species	Mus musculus (Mouse)
Purity	≥ 90% as determined by SDS-PAGE.
Sequence	PSGTSQCEDGSAGGFQHLDMHSEKRQLEKGPSGDKDRVWIRPDTPSRCTW QLGRAMADSPHYHTVLTKSPKILPDILRKIGNTPMVRINKISKNAAGLKCELLAKC EFFNAGGSSVKDRISLRMIEDAERAGNLKPGDTIIEPTSGNTGIGLALAAVKG RCIIVMPEKMSMEKVDVLRALGAEIVRTPTNARFDSPEHVGVAVRLKNEIPN SHILDQYRNASNPLAHYDDTAEEILQQCDGKLDMLVASAGTGGTITGIARKLKE KCPGCKIIGVDPEGSILAEPEELNQTEQTAYEVEGIGYDFIPTVLDRAVVDKWF KSNDEDSFAFARMLIAQEGLLCGSSGSAMAVAVKAARELQEGQRCVVILPD SVRNYMSKFLSDKWMLQKGFMEELSVKRPWWRLRVQELSLSAPLTVLPT VTCEDTIALREKGFQAPVNVESGAILGMVTLGNMLSSLLAGKVRPSDEVCKV LYKQFKPIHLTDLGTLSHILEMDHFALVVHEQIQSRDQAWSGVVGPTDCSN GMSSKQQMVFGVVTAIDLLNFVAAREQTQT
Research Area	Others
Source	E.coli
Target Names	Cbs
Expression Region	2-561aa
Notes	Repeated freezing and thawing is not recommended. Store working aliquots at 4°C for up to one week.
Tag Info	N-terminal 6xHis-tagged
Mol. Weight	65.4kDa
Protein Length	Full Length of Mature Protein



Image



(Tris-Glycine gel) Discontinuous SDS-PAGE (reduced) with 5% enrichment gel and 15% separation gel.

Reconstitution

We recommend that this vial be briefly centrifuged prior to opening to bring the contents to the bottom. Please reconstitute protein in deionized sterile water to a concentration of 0.1-1.0 mg/mL. We recommend to add 5-50% of glycerol (final concentration) and aliquot for long-term storage at -20°C/-80°C. Our default final concentration of glycerol is 50%. Customers could use it as reference.

Shelf Life

The shelf life is related to many factors, storage state, buffer ingredients, storage temperature and the stability of the protein itself.

Generally, the shelf life of liquid form is 6 months at -20°C/-80°C. The shelf life of lyophilized form is 12 months at -20°C/-80°C.