



Recombinant Human Rab proteins geranylgeranyltransferase component A 1 (CHM)

Product Code	CSB-EP005356HU
Relevance	Substrate-binding subunit of the Rab geranylgeranyltransferase (GGTase) complex. Binds unprenylated Rab proteins and presents the substrate peptide to the catalytic component B composed of RABGGTA and RABGGTB, and remains bound to it after the geranylgeranyl transfer reaction. The component A is thought to be regenerated by transferring its prenylated Rab back to the donor membrane. Besides, a pre-formed complex consisting of CHM and the Rab GGTase dimer (RGGT or component B) can bind to and prenylate Rab proteins; this alternative pathway is proposed to be the predominant pathway for Rab protein geranylgeranylation.
Abbreviation	Recombinant Human CHM protein
Storage	The shelf life is related to many factors, storage state, buffer ingredients, storage temperature and the stability of the protein itself. Generally, the shelf life of liquid form is 6 months at -20°C/-80°C. The shelf life of lyophilized form is 12 months at -20°C/-80°C.
Uniprot No.	P24386
Alias	Choroideremia protein Rab escort protein 1 Short name:REP-1 TCD protein
Product Type	Recombinant Protein
Immunogen Species	Homo sapiens (Human)
Purity	≥ 90% as determined by SDS-PAGE.
Sequence	MADTLPSEFDVIVIGTGLPESIIAACSRSRGRVVLHVDSRSYYGGNWASFSFSG LLSWLKEYQENSDIVSDSPVWQDQILENEEAIALSRKDKTIQHVEVFCYASQDL HEDVEEAGALQKNHALVTSANSTEAADSAFLPTEDESLSTMSCMLTEQTPSS DPENALEVNGAEVTGEKENHCDDKTCVPSTSAEDMSENVPIAEDTTEQPKKN RITYSQIIKEGRRFNIDLVSLLYSRGLLIDLLIKSNVSRYAIEFKNITRILAFREGRV EQVPCSRADVFNKQLTMVEKRMLMKFLTFCMEYEKYPDEYKGYEIEITFYEYL KTQKLTPNLQYIVMHSIAMTSETASSTIDGLKATKNFLHCLGRYGNTPFPLFLY GGGELPQCFCRMCVAVFGGIYCLRHSVQCLVVDKESRKCKAIIIDQFGQRIIEHF LVEDSYFPENMCSRVRQYRQISRAVLITDRSVLKTDSDDQISILTVPAEPEGTF VRVIELCSSTMTCMKGTYLVLHLCCTSSKTAREDLSEVQKLFVPTYTEMEIENEQ VEKPRILWALYFNMRDSSDISRSCYNDLPSNVYVCSGPDCGLGNDNAVKQAE TLFQEICPNEDFCPPPPNPEDIILDGDSLQPEASESSAIEANSETFKESTNLGN LEESSE
Research Area	Neuroscience
Source	E.coli
Target Names	CHM
Expression Region	1-653aa



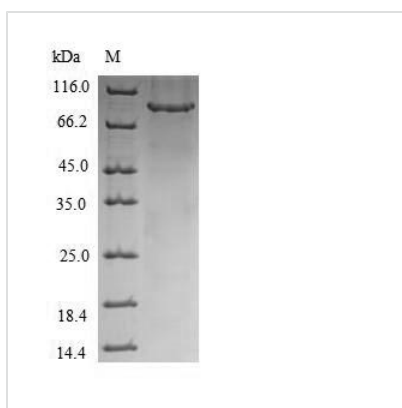
Notes Repeated freezing and thawing is not recommended. Store working aliquots at 4°C for up to one week.

Tag Info N-terminal 6xHis-tagged

Mol. Weight 77.5kDa

Protein Length Full Length

Image



(Tris-Glycine gel) Discontinuous SDS-PAGE (reduced) with 5% enrichment gel and 15% separation gel.

Reconstitution We recommend that this vial be briefly centrifuged prior to opening to bring the contents to the bottom. Please reconstitute protein in deionized sterile water to a concentration of 0.1-1.0 mg/mL. We recommend to add 5-50% of glycerol (final concentration) and aliquot for long-term storage at -20°C/-80°C. Our default final concentration of glycerol is 50%. Customers could use it as reference.

Shelf Life The shelf life is related to many factors, storage state, buffer ingredients, storage temperature and the stability of the protein itself. Generally, the shelf life of liquid form is 6 months at -20°C/-80°C. The shelf life of lyophilized form is 12 months at -20°C/-80°C.