

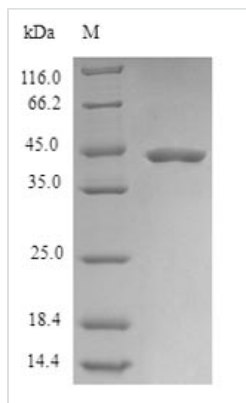


Recombinant Human Mitochondrial cardiolipin hydrolase (PLD6)

Product Code	CSB-EP836649HU
Relevance	Regulates mitochondrial shape through facilitating mitochondrial fusion. During spermatogenesis, plays a critical role in PIWI-interacting RNA (piRNA) biogenesis (By similarity). piRNAs provide essential protection against the activity of mobile genetic elements. piRNA-mediated transposon silencing is thus critical for maintaining genome stability, in particular in germline cells when transposons are mobilized as a consequence of wide-spread genomic demethylation. Has been shown to be a backbone-non-specific, single strand-specific nuclease, cleaving either RNA or DNA substrates with similar affinity (By similarity). Produces 5' phosphate and 3' hydroxyl termini, suggesting it could directly participate in the processing of primary piRNA transcripts (By similarity). Has been proposed to act as a cardiolipin hydrolase to generate phosphatidic acid at mitochondrial surface. Although it cannot be excluded that it can act as a phospholipase in some circumstances, it should be noted that cardiolipin hydrolase activity is either undetectable in vitro, or very low (PubMed:21397848). In addition, cardiolipin is almost exclusively found on the inner mitochondrial membrane, while PLD6 localizes to the outer mitochondrial membrane, facing the cytosol.
Abbreviation	Recombinant Human PLD6 protein
Storage	The shelf life is related to many factors, storage state, buffer ingredients, storage temperature and the stability of the protein itself. Generally, the shelf life of liquid form is 6 months at -20°C/-80°C. The shelf life of lyophilized form is 12 months at -20°C/-80°C.
Uniprot No.	Q8N2A8
Alias	Choline phosphatase 6 Mitochondrial phospholipase Short name:MitoPLD Phosphatidylcholine-hydrolyzing phospholipase D6 Phospholipase D6 Short name:PLD 6 Protein zucchini homolog
Product Type	Recombinant Protein
Immunogen Species	Homo sapiens (Human)
Purity	≥ 90% as determined by SDS-PAGE.
Sequence	MGRLSWQVAAAAAVGLALTLEALPWVLRWLRSSRRRRPRREALFFPSQVTCTE ALLRAPGAELAELPEGCPCGLPHGESALSRLLRALLAARASLDLCLFAFSSPQL GRAVQLLHQRGVRVRVVTDCDYMALNGSQIGLLRKAGIQVRHDQDPGYMHH KFAIVDKRVLITGSLNWTQAIQNNRENLITEDDEYVRLFLEEFERIWEQFNPT KYTFFPPKKSHGSCAPPVSRAGGRLLSWHRTCSTSESQT
Research Area	Epigenetics and Nuclear Signaling
Source	E.coli
Target Names	PLD6



Expression Region	1-252aa
Notes	Repeated freezing and thawing is not recommended. Store working aliquots at 4°C for up to one week.
Tag Info	N-terminal 6xHis-SUMO-tagged
Mol. Weight	44.3kDa
Protein Length	Full Length

Image


(Tris-Glycine gel) Discontinuous SDS-PAGE (reduced) with 5% enrichment gel and 15% separation gel.

Reconstitution We recommend that this vial be briefly centrifuged prior to opening to bring the contents to the bottom. Please reconstitute protein in deionized sterile water to a concentration of 0.1-1.0 mg/mL. We recommend to add 5-50% of glycerol (final concentration) and aliquot for long-term storage at -20°C/-80°C. Our default final concentration of glycerol is 50%. Customers could use it as reference.

Shelf Life The shelf life is related to many factors, storage state, buffer ingredients, storage temperature and the stability of the protein itself. Generally, the shelf life of liquid form is 6 months at -20°C/-80°C. The shelf life of lyophilized form is 12 months at -20°C/-80°C.