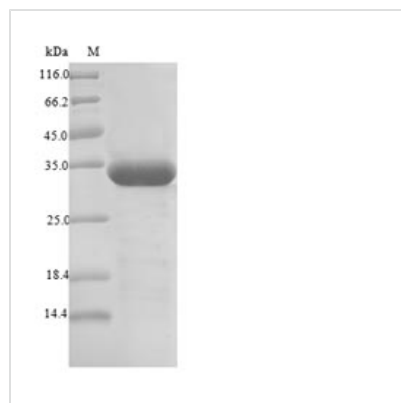




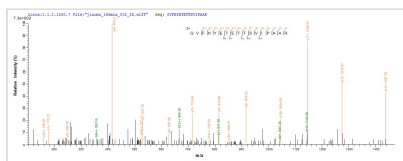
Recombinant *Betula pendula* Major pollen allergen Bet v 1-A (BETVIA)

Product Code	CSB-EP322213BSS
Relevance	May be a general steroid carrier protein.
Abbreviation	Recombinant <i>Betula pendula</i> BETVIA protein
Storage	The shelf life is related to many factors, storage state, buffer ingredients, storage temperature and the stability of the protein itself. Generally, the shelf life of liquid form is 6 months at -20°C/-80°C. The shelf life of lyophilized form is 12 months at -20°C/-80°C.
Uniprot No.	P15494
Alias	Allergen Bet v I-A Allergen: Bet v 1-A
Product Type	Recombinant Protein
Immunogen Species	<i>Betula pendula</i> (European white birch) (<i>Betula verrucosa</i>)
Purity	Greater than 90% as determined by SDS-PAGE.
Sequence	GVFNYETETTSVIPAAARLFKAFILDGDNLFPKVAPQAISSVENIEGNGGPGTIKKI SFPEGFPFKYVKDRVDEVDHTNFKYNYSVIEGGPIGDTLEKISNEIKIVATPDGG SILKISNKYHTKGDHEVKAQVVKASKEMGETLLRAVESYLLAHSDAYN
Research Area	Allergen
Source	E.coli
Target Names	BETVIA
Expression Region	2-160aa
Notes	Repeated freezing and thawing is not recommended. Store working aliquots at 4°C for up to one week.
Tag Info	N-terminal 6xHis-SUMO-tagged
Mol. Weight	33.4kDa
Protein Length	Full Length of Mature Protein

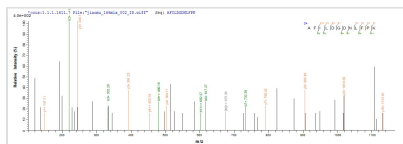
Image



(Tris-Glycine gel) Discontinuous SDS-PAGE (reduced) with 5% enrichment gel and 15% separation gel.



Based on the SEQUEST from database of E.coli host and target protein, the LC-MS/MS Analysis result of CSB-EP322213BSS could indicate that this peptide derived from E.coli-expressed *Betula pendula* (European white birch) (*Betula verrucosa*) BETVIA.



Based on the SEQUEST from database of E.coli host and target protein, the LC-MS/MS Analysis result of CSB-EP322213BSS could indicate that this peptide derived from E.coli-expressed *Betula pendula* (European white birch) (*Betula verrucosa*) BETVIA.

Reconstitution

We recommend that this vial be briefly centrifuged prior to opening to bring the contents to the bottom. Please reconstitute protein in deionized sterile water to a concentration of 0.1-1.0 mg/mL. We recommend to add 5-50% of glycerol (final concentration) and aliquot for long-term storage at -20°C/-80°C. Our default final concentration of glycerol is 50%. Customers could use it as reference.

Shelf Life

The shelf life is related to many factors, storage state, buffer ingredients, storage temperature and the stability of the protein itself. Generally, the shelf life of liquid form is 6 months at -20°C/-80°C. The shelf life of lyophilized form is 12 months at -20°C/-80°C.