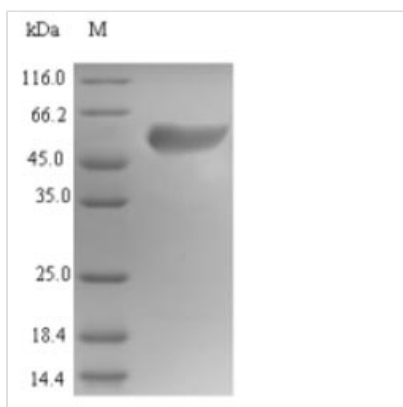


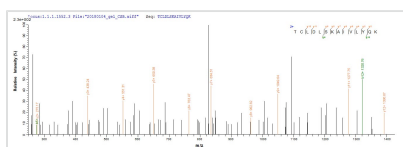


Recombinant Human Islet cell autoantigen 1 (ICA1)

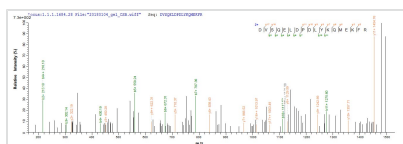
Product Code	CSB-EP010947HU(F1)
Relevance	May play a role in neurotransmitter secretion.
Abbreviation	Recombinant Human ICA1 protein
Storage	The shelf life is related to many factors, storage state, buffer ingredients, storage temperature and the stability of the protein itself. Generally, the shelf life of liquid form is 6 months at -20°C/-80°C. The shelf life of lyophilized form is 12 months at -20°C/-80°C.
Uniprot No.	Q05084
Alias	69 kDa islet cell autoantigen Short name: ICA69 Islet cell autoantigen p69 Short name: ICAp69 Short name: p69
Product Type	Recombinant Protein
Immunogen Species	Homo sapiens (Human)
Purity	≥ 85% as determined by SDS-PAGE.
Sequence	MSGHKCYPWDLQDRYAQDKSVVNKMQQKYWETKQAFIKATGKKKEDEHVVAS DADLDAKLELFHSIQRTCLDLSKAIVLYQKRICFLSQEENELGKFLRSQGFQDK TRAGKMMQATGKALCFSSQQRLALRNPLCRFHQEVETFRHRAISDTWLTVNR MEQCRTEYRGALLWMKDVSQELDPDLYKQMEKFRKVQQTQVRLAKKNFDKDK MDVCQKVDLLGASRCNLLSHMLATYQTLLHFWEKTSHTMAAIHESFKGYQP YEF TTLKSLQDPMKKLVEKEEKKKINQQESTDAAVQEPSQLISLEENQRKESS SFKTEDGKSILSALDKGSTHTACSGPIDELLDKSEEGACLGPVAGTPEPEGA DKDDL LLLSEIFNASSLEEGEFSKEWAAVFGDGGVKEPVPTMALGEPDPAKQT GSGFLPSQLLDQNMKDLQASLQEPAKAASDLTAWFSLFADLDPLSNPDAVGK TDKEHELLNA
Research Area	Neuroscience
Source	E.coli
Target Names	ICA1
Protein Names	69KDA islet cell autoantigen Short name: ICA69 Islet cell autoantigen p69 Short name: ICAp69 Short name: p69
Expression Region	1-482aa
Notes	Repeated freezing and thawing is not recommended. Store working aliquots at 4°C for up to one week.
Tag Info	N-terminal 6xHis-tagged
Mol. Weight	60.1 kDa
Protein Length	Full Length of Isoform 3
Image	



(Tris-Glycine gel) Discontinuous SDS-PAGE (reduced) with 5% enrichment gel and 15% separation gel.



Based on the SEQUEST from database of E.coli host and target protein, the LC-MS/MS Analysis result of CSB-EP010947HU(F1) could indicate that this peptide derived from E.coli-expressed Homo sapiens (Human) ICA1.



Based on the SEQUEST from database of E.coli host and target protein, the LC-MS/MS Analysis result of CSB-EP010947HU(F1) could indicate that this peptide derived from E.coli-expressed Homo sapiens (Human) ICA1.

Reconstitution

We recommend that this vial be briefly centrifuged prior to opening to bring the contents to the bottom. Please reconstitute protein in deionized sterile water to a concentration of 0.1-1.0 mg/mL. We recommend to add 5-50% of glycerol (final concentration) and aliquot for long-term storage at -20°C/-80°C. Our default final concentration of glycerol is 50%. Customers could use it as reference.

Shelf Life

The shelf life is related to many factors, storage state, buffer ingredients, storage temperature and the stability of the protein itself. Generally, the shelf life of liquid form is 6 months at -20°C/-80°C. The shelf life of lyophilized form is 12 months at -20°C/-80°C.