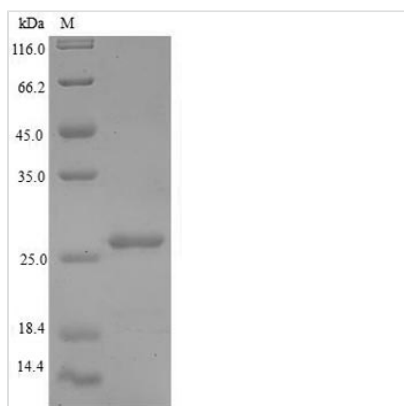




Recombinant Human Large ribosomal subunit protein P1 (RPLP1)

Product Code	CSB-EP020340HU
Relevance	Plays an important role in the elongation step of protein synthesis.
Abbreviation	Recombinant Human RPLP1 protein
Storage	The shelf life is related to many factors, storage state, buffer ingredients, storage temperature and the stability of the protein itself. Generally, the shelf life of liquid form is 6 months at -20°C/-80°C. The shelf life of lyophilized form is 12 months at -20°C/-80°C.
Uniprot No.	P05386
Product Type	Recombinant Proteins
Immunogen Species	Homo sapiens (Human)
Purity	Greater than 90% as determined by SDS-PAGE.
Sequence	ASVSELACIYSALILHDDEVTVTEDKINALIKAAGVNVPEFPWGLFAKALANVNI GSLICNVGAGGPAPAAGAAPAGGPAPSTAAAPAEKKVEAKKEESEESDDDM GFLFD
Research Area	Epigenetics and Nuclear Signaling
Source	E.coli
Target Names	RPLP1
Expression Region	2-114aa
Notes	Repeated freezing and thawing is not recommended. Store working aliquots at 4°C for up to one week.
Tag Info	N-terminal 6xHis-SUMO-tagged
Mol. Weight	27.4kDa
Protein Length	Full Length of Mature Protein

Image



(Tris-Glycine gel) Discontinuous SDS-PAGE (reduced) with 5% enrichment gel and 15% separation gel.



Shelf Life

The shelf life is related to many factors, storage state, buffer ingredients, storage temperature and the stability of the protein itself.

Generally, the shelf life of liquid form is 6 months at -20°C/-80°C. The shelf life of lyophilized form is 12 months at -20°C/-80°C.