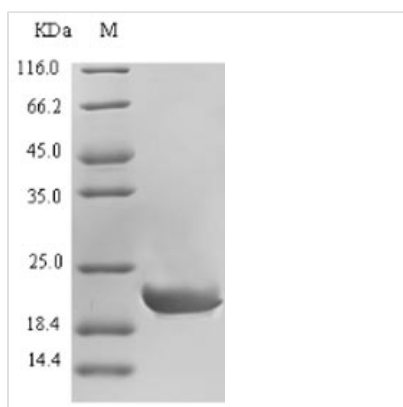




Recombinant Dog Calcitonin (CALCA)

| | |
|--------------------------|---|
| Product Code | CSB-EP004434DO |
| Relevance | Causes a rapid but short-lived drop in the level of calcium and phosphate in blood by promoting the incorporation of those ions in the bones. |
| Abbreviation | Recombinant Dog CALCA protein, partial |
| Storage | The shelf life is related to many factors, storage state, buffer ingredients, storage temperature and the stability of the protein itself. Generally, the shelf life of liquid form is 6 months at -20°C/-80°C. The shelf life of lyophilized form is 12 months at -20°C/-80°C. |
| Uniprot No. | P41547 |
| Product Type | Recombinant Protein |
| Immunogen Species | Canis lupus familiaris (Dog) (Canis familiaris) |
| Purity | ≥ 90% as determined by SDS-PAGE. |
| Sequence | CSNLSTCVLGTYSKDLNNFHTFSGIGFGAETP |
| Research Area | Cardiovascular |
| Source | E.coli |
| Target Names | CALCA |
| Expression Region | 85-116aa |
| Notes | Repeated freezing and thawing is not recommended. Store working aliquots at 4°C for up to one week. |
| Tag Info | N-terminal 6xHis-SUMO-tagged |
| Mol. Weight | 19.4kDa |
| Protein Length | Full Length of Mature Protein |

Image



(Tris-Glycine gel) Discontinuous SDS-PAGE (reduced) with 5% enrichment gel and 15% separation gel.

Reconstitution

We recommend that this vial be briefly centrifuged prior to opening to bring the contents to the bottom. Please reconstitute protein in deionized sterile water to a concentration of 0.1-1.0 mg/mL. We recommend to add 5-50% of glycerol (final concentration) and aliquot for long-term storage at -20°C/-80°C. Our default final



concentration of glycerol is 50%. Customers could use it as reference.

Shelf Life

The shelf life is related to many factors, storage state, buffer ingredients, storage temperature and the stability of the protein itself.

Generally, the shelf life of liquid form is 6 months at -20°C/-80°C. The shelf life of lyophilized form is 12 months at -20°C/-80°C.