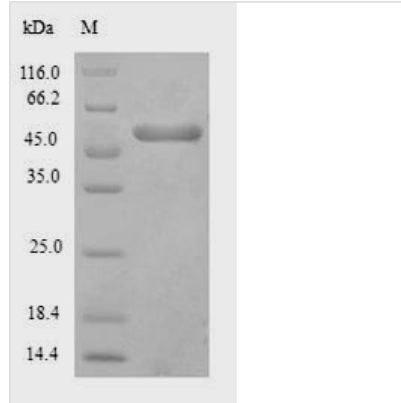


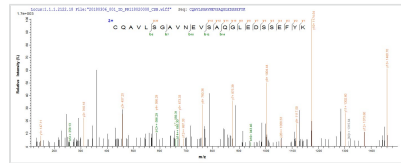


# Recombinant *Saccharomyces cerevisiae* Polyphosphatase (PPX1)

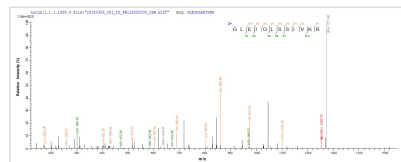
<b>Product Code</b>	CSB-EP334459SVG
<b>Relevance</b>	Degradation of inorganic polyphosphates.
<b>Abbreviation</b>	Recombinant <i>Saccharomyces cerevisiae</i> PPX1 protein
<b>Storage</b>	The shelf life is related to many factors, storage state, buffer ingredients, storage temperature and the stability of the protein itself. Generally, the shelf life of liquid form is 6 months at -20°C/-80°C. The shelf life of lyophilized form is 12 months at -20°C/-80°C.
<b>Uniprot No.</b>	P38698
<b>Product Type</b>	Recombinant Proteins
<b>Immunogen Species</b>	<i>Saccharomyces cerevisiae</i> (strain ATCC 204508 / S288c) (Baker's yeast)
<b>Purity</b>	Greater than 90% as determined by SDS-PAGE.
<b>Sequence</b>	MSPLRKTVPEFLAHLKSLPISKIASNDVLTICVGNESADMDSIASAITYSYCQYIY NEGTYSEEKKKGSFIVPIIDIPREDLSLRDVMYVLEKLIKIEEELFFIEDLKSLK QNVSQGTELN SYLVDNNDTPKNLKNYIDNVVGIIDHFDLQKHLDAEPRIVKVS GSCSSLVFNYWYEKLGQDREVVMNIAPLLMGAILIDTSNMRRKVEESDKLAIER CQAVLSGAVNEVSAQGLEDSSSEFYKEIKSRKNDIKGFSVSDILKKDYKQFNFQ GKGHGKLEIGLSSIVKRMSWLFNEHGG EADFVNQCRRFQAERGLDVLVLLTS WRKAGDSHRELVLGDSNVVRELIERVSDKQLQLFLGGNLDGGVAMFKQLNV EATRQVVPYLEEAYS NLEE
<b>Research Area</b>	Others
<b>Source</b>	E.coli
<b>Target Names</b>	PPX1
<b>Expression Region</b>	1-397aa
<b>Notes</b>	Repeated freezing and thawing is not recommended. Store working aliquots at 4°C for up to one week.
<b>Tag Info</b>	N-terminal 6xHis-tagged
<b>Mol. Weight</b>	49.1kDa
<b>Protein Length</b>	Full Length
<b>Image</b>	



(Tris-Glycine gel) Discontinuous SDS-PAGE (reduced) with 5% enrichment gel and 15% separation gel.



Based on the SEQUEST from database of E.coli host and target protein, the LC-MS/MS Analysis result of CSB-EP334459SVG could indicate that this peptide derived from E.coli-expressed *Saccharomyces cerevisiae* (strain ATCC 204508 / S288c) (Baker)



Based on the SEQUEST from database of E.coli host and target protein, the LC-MS/MS Analysis result of CSB-EP334459SVG could indicate that this peptide derived from E.coli-expressed *Saccharomyces cerevisiae* (strain ATCC 204508 / S288c) (Baker)

## Shelf Life

The shelf life is related to many factors, storage state, buffer ingredients, storage temperature and the stability of the protein itself.

Generally, the shelf life of liquid form is 6 months at -20°C/-80°C. The shelf life of lyophilized form is 12 months at -20°C/-80°C.