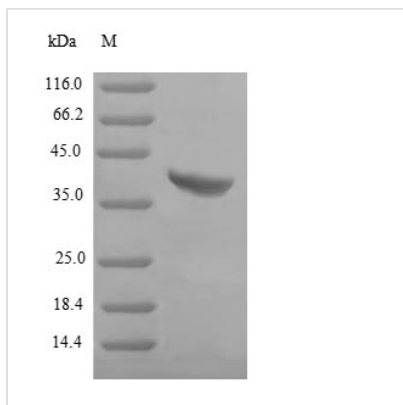


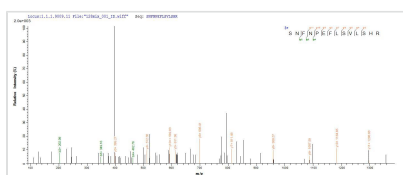


Recombinant Staphylococcus aureus Gamma-hemolysin component B (hlgB)

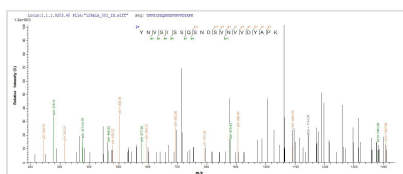
Product Code	CSB-EP357862SKY
Relevance	Toxin that seems to act by forming pores in the membrane of the cell. Has a hemolytic and a leucotoxic activity
Abbreviation	Recombinant Staphylococcus aureus hlgB protein
Storage	The shelf life is related to many factors, storage state, buffer ingredients, storage temperature and the stability of the protein itself. Generally, the shelf life of liquid form is 6 months at -20°C/-80°C. The shelf life of lyophilized form is 12 months at -20°C/-80°C.
Uniprot No.	P0A075
Alias	H-gamma-1 H-gamma-I
Product Type	Recombinant Protein
Immunogen Species	Staphylococcus aureus (strain N315)
Purity	Greater than 90% as determined by SDS-PAGE.
Sequence	AEGKITPVSVKKVDKVTLYKTTATADSDKFKISQILTFNFIKDKSYDKDTLVLKA TGNINSGFVKPNPNDYDFSKLYWGAKYNVSISSQSNDSVNVVDYAPKNQNEE FQVQNTLGYTFGGDISISNGLSGGLNGNTAFSETINYKQESYRTTTLRNTNYKN VGWGWVEAHKIMNNGWGPYGRDSFHPTYGNELFLAGRQSSAYAGQNFIAQHQ MPLLSRSNPNPEFLSVLSHRQDGAKKSKITVTYQREMDLYQIRWNGFYWAGA NYKNFKTRTFKSTYEIDWENHKVKLLDTKETENNK
Research Area	others
Source	E.coli
Target Names	hlgB
Expression Region	26-325aa
Notes	Repeated freezing and thawing is not recommended. Store working aliquots at 4°C for up to one week.
Tag Info	N-terminal 6xHis-tagged
Mol. Weight	38.1kDa
Protein Length	Full Length of Mature Protein
Image	



(Tris-Glycine gel) Discontinuous SDS-PAGE (reduced) with 5% enrichment gel and 15% separation gel.



Based on the SEQUEST from database of E.coli host and target protein, the LC-MS/MS Analysis result of CSB-EP357862SKY could indicate that this peptide derived from E.coli-expressed Staphylococcus aureus (strain N315) hlgB.



Based on the SEQUEST from database of E.coli host and target protein, the LC-MS/MS Analysis result of CSB-EP357862SKY could indicate that this peptide derived from E.coli-expressed Staphylococcus aureus (strain N315) hlgB.

Reconstitution

We recommend that this vial be briefly centrifuged prior to opening to bring the contents to the bottom. Please reconstitute protein in deionized sterile water to a concentration of 0.1-1.0 mg/mL. We recommend to add 5-50% of glycerol (final concentration) and aliquot for long-term storage at -20°C/-80°C. Our default final concentration of glycerol is 50%. Customers could use it as reference.

Shelf Life

The shelf life is related to many factors, storage state, buffer ingredients, storage temperature and the stability of the protein itself. Generally, the shelf life of liquid form is 6 months at -20°C/-80°C. The shelf life of lyophilized form is 12 months at -20°C/-80°C.