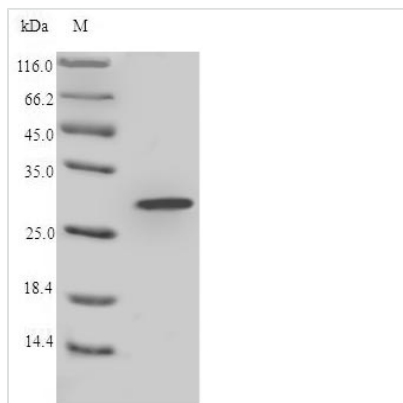




Recombinant Lophura leucomelanos Lysozyme C (LYZ)

Product Code	CSB-EP013283LIQ
Relevance	Lysozymes have primarily a bacteriolytic function; those in tissues and body fluids are associated with the monocyte-macrophage system and enhance the activity of immunoagents. Hydrolysis of (1->4)-beta-linkages between N-acetylmuramic acid and N-acetyl-D-glucosamine residues in a peptidoglycan and between N-acetyl-D-glucosamine residues in chitodextrins.
Abbreviation	Recombinant Lophura leucomelanos LYZ protein
Storage	The shelf life is related to many factors, storage state, buffer ingredients, storage temperature and the stability of the protein itself. Generally, the shelf life of liquid form is 6 months at -20°C/-80°C. The shelf life of lyophilized form is 12 months at -20°C/-80°C.
Uniprot No.	P24364
Alias	1,4-beta-N-acetylmuramidase
Product Type	Recombinant Protein
Immunogen Species	Lophura leucomelanos (Kalij pheasant)
Purity	≥ 90% as determined by SDS-PAGE.
Sequence	KVYGRCELAAAMKRLGLDNYRGYSLGNWVCAAKYESNFNTHATNRNTDGST DYGILQINSRWWCNDGKTPGSRNLCHIPCSALLSSDITASVNC AKKIVSDGNG MNAWVAWRNRCKGTDVSVWTRGCRL
Research Area	Immunology
Source	E.coli
Target Names	LYZ
Expression Region	1-129aa
Notes	Repeated freezing and thawing is not recommended. Store working aliquots at 4°C for up to one week.
Tag Info	N-terminal 6xHis-SUMO-tagged
Mol. Weight	30.3kDa
Protein Length	Full Length
Image	



(Tris-Glycine gel) Discontinuous SDS-PAGE (reduced) with 5% enrichment gel and 15% separation gel.

Reconstitution

We recommend that this vial be briefly centrifuged prior to opening to bring the contents to the bottom. Please reconstitute protein in deionized sterile water to a concentration of 0.1-1.0 mg/mL. We recommend to add 5-50% of glycerol (final concentration) and aliquot for long-term storage at -20°C/-80°C. Our default final concentration of glycerol is 50%. Customers could use it as reference.

Shelf Life

The shelf life is related to many factors, storage state, buffer ingredients, storage temperature and the stability of the protein itself. Generally, the shelf life of liquid form is 6 months at -20°C/-80°C. The shelf life of lyophilized form is 12 months at -20°C/-80°C.