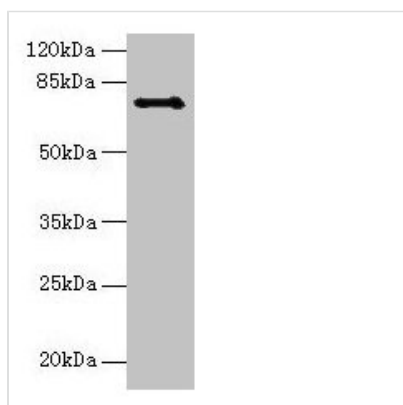




Ctcf1 Antibody

Product Code	CSB-PA006139LA01MO
Storage	Upon receipt, store at -20°C or -80°C. Avoid repeated freeze.
Uniprot No.	A2APF3
Immunogen	Recombinant Mouse Transcriptional repressor CTCFL protein (1-636AA)
Raised In	Rabbit
Species Reactivity	Mouse, Human
Tested Applications	ELISA, WB; Recommended dilution: WB:1:500-1:2000
Form	Liquid
Conjugate	Non-conjugated
Storage Buffer	Preservative: 0.03% Proclin 300 Constituents: 50% Glycerol, 0.01M PBS, PH 7.4
Purification Method	>95%, Protein G purified
Isotype	IgG
Clonality	Polyclonal
Alias	Transcriptional repressor CTCFL (Brother of the regulator of imprinted sites) (CCCTC-binding factor) (CTCF paralog) (CTCF-like protein), Ctcf1, Boris
Immunogen Species	Mus musculus (Mouse)
Research Area	Epigenetics and Nuclear Signaling
Target Names	Ctcf1

Image



Western blot

All lanes: Ctcf1 antibody at 6µg/ml + HeLa whole cell lysate

Secondary

Goat polyclonal to rabbit IgG at 1/10000 dilution

Predicted band size: 74, 75 kDa

Observed band size: 74 kDa

Usage

For Research Use Only. Not for use in diagnostic or therapeutic procedures.