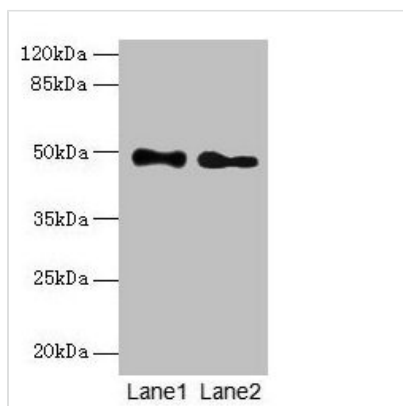




# ABHD2 Antibody

<b>Product Code</b>	CSB-PA001094LA01HU
<b>Storage</b>	Upon receipt, store at -20°C or -80°C. Avoid repeated freeze.
<b>Uniprot No.</b>	P08910
<b>Immunogen</b>	Recombinant Human Monoacylglycerol lipase ABHD2 protein (31-320AA)
<b>Raised In</b>	Rabbit
<b>Species Reactivity</b>	Human, Mouse, Rat
<b>Tested Applications</b>	ELISA, WB, IHC, IF; Recommended dilution: WB:1:500-1:5000, IHC:1:20-1:200, IF:1:50-1:200
<b>Form</b>	Liquid
<b>Conjugate</b>	Non-conjugated
<b>Storage Buffer</b>	Preservative: 0.03% Proclin 300 Constituents: 50% Glycerol, 0.01M PBS, PH 7.4
<b>Purification Method</b>	>95%, Protein G purified
<b>Isotype</b>	IgG
<b>Clonality</b>	Polyclonal
<b>Alias</b>	Monoacylglycerol lipase ABHD2 (EC 3.1.1.23) (2-arachidonoylglycerol hydrolase) (Abhydrolase domain-containing protein 2) (Lung alpha/beta hydrolase 2) (Protein PHPS1-2), ABHD2, LABH2
<b>Immunogen Species</b>	Homo sapiens (Human)
<b>Research Area</b>	Others
<b>Target Names</b>	ABHD2

## Image



### Western blot

All lanes: ABHD2 antibody at 10µg/ml

Lane 1: Mouse heart tissue

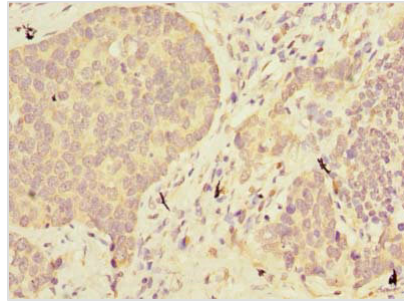
Lane 2: Rat gonadal tissue

Secondary

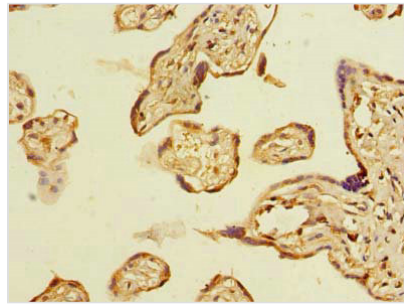
Goat polyclonal to rabbit IgG at 1/10000 dilution

Predicted band size: 49 kDa

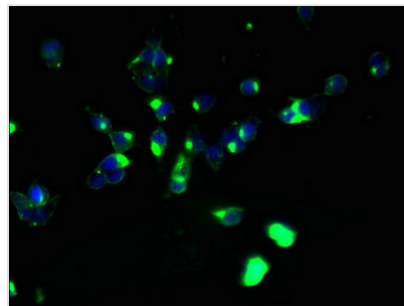
Observed band size: 49 kDa



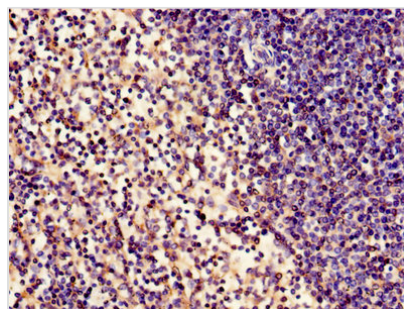
Immunohistochemistry of paraffin-embedded human gastric cancer using CSB-PA001094LA01HU at dilution of 1:100



Immunohistochemistry of paraffin-embedded human placenta tissue using CSB-PA001094LA01HU at dilution of 1:100



Immunofluorescent analysis of 293T cells using CSB-PA001094LA01HU at dilution of 1:100 and Alexa Fluor 488-conjugated AffiniPure Goat Anti-Rabbit IgG(H+L)



Immunohistochemistry of paraffin-embedded human spleen tissue using CSB-PA001094LA01HU at dilution of 1:100

## Usage

For Research Use Only. Not for use in diagnostic or therapeutic procedures.