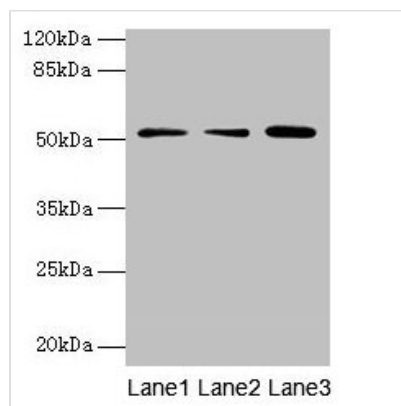




# ACSBG2 Antibody

<b>Product Code</b>	CSB-PA685911LA01HU
<b>Storage</b>	Upon receipt, store at -20°C or -80°C. Avoid repeated freeze.
<b>Uniprot No.</b>	Q5FVE4
<b>Immunogen</b>	Recombinant Human Long-chain-fatty-acid--CoA ligase ACSBG2 protein (301-600AA)
<b>Raised In</b>	Rabbit
<b>Species Reactivity</b>	Human
<b>Tested Applications</b>	ELISA, WB, IHC; Recommended dilution: WB:1:500-1:2000, IHC:1:20-1:200
<b>Form</b>	Liquid
<b>Conjugate</b>	Non-conjugated
<b>Storage Buffer</b>	Preservative: 0.03% Proclin 300 Constituents: 50% Glycerol, 0.01M PBS, PH 7.4
<b>Purification Method</b>	>95%, Protein G purified
<b>Isotype</b>	IgG
<b>Clonality</b>	Polyclonal
<b>Alias</b>	Long-chain-fatty-acid--CoA ligase ACSBG2 (EC 6.2.1.3) (Acyl-CoA synthetase bubblegum family member 2) (Bubblegum-related protein) (PRTD-NY3), ACSBG2, BGR
<b>Immunogen Species</b>	Homo sapiens (Human)
<b>Research Area</b>	Signal Transduction
<b>Target Names</b>	ACSBG2

## Image



### Western blot

All lanes: ACSBG2 antibody at 4µg/ml

Lane 1: A431 whole cell lysate

Lane 2: K562 whole cell lysate

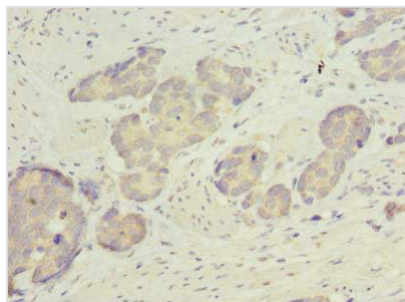
Lane 3: A549 whole cell lysate

Secondary

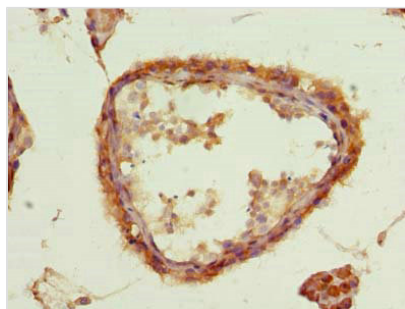
Goat polyclonal to rabbit IgG at 1/10000 dilution

Predicted band size: 75, 69, 54, 52 kDa

Observed band size: 52 kDa



Immunohistochemistry of paraffin-embedded human gastric cancer using CSB-PA685911LA01HU at dilution of 1:100



Immunohistochemistry of paraffin-embedded human testis tissue using CSB-PA685911LA01HU at dilution of 1:100

## Usage

For Research Use Only. Not for use in diagnostic or therapeutic procedures.