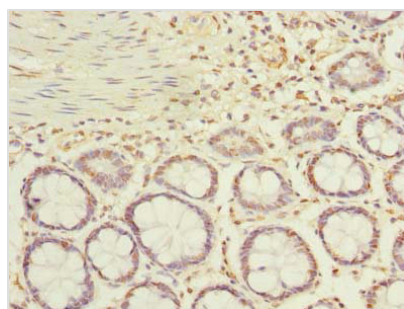




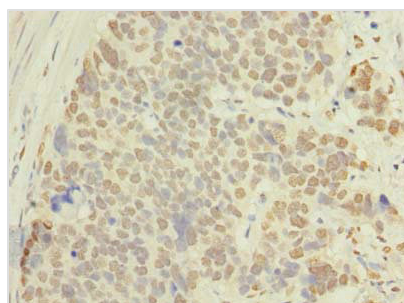
ACTRT1 Antibody

Product Code	CSB-PA001255LA01HU
Storage	Upon receipt, store at -20°C or -80°C. Avoid repeated freeze.
Uniprot No.	Q8TDG2
Immunogen	Recombinant Human Actin-related protein T1 protein (201-376AA)
Raised In	Rabbit
Species Reactivity	Human
Tested Applications	ELISA, IHC, IF; Recommended dilution: IHC:1:20-1:200, IF:1:50-1:200
Form	Liquid
Conjugate	Non-conjugated
Storage Buffer	Preservative: 0.03% Proclin 300 Constituents: 50% Glycerol, 0.01M PBS, PH 7.4
Purification Method	>95%, Protein G purified
Isotype	IgG
Clonality	Polyclonal
Alias	Actin-related protein T1 (ARP-T1), ACTRT1, ARPT1
Immunogen Species	Homo sapiens (Human)
Research Area	Signal Transduction
Target Names	ACTRT1

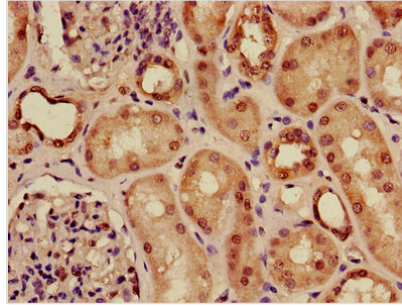
Image



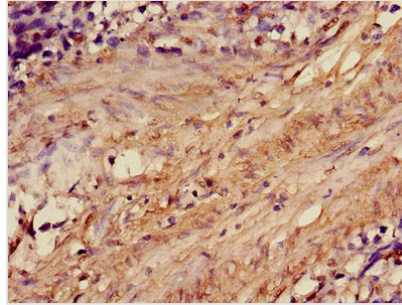
Immunohistochemistry of paraffin-embedded human colon tissue using CSB-PA001255LA01HU at dilution of 1:100



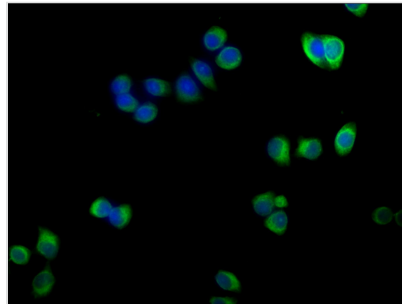
Immunohistochemistry of paraffin-embedded human gastric cancer using CSB-PA001255LA01HU at dilution of 1:100



Immunohistochemistry of paraffin-embedded human kidney tissue using CSB-PA001255LA01HU at dilution of 1:100



Immunohistochemistry of paraffin-embedded human smooth muscle tissue using CSB-PA001255LA01HU at dilution of 1:100



Immunofluorescence staining of PC-3 cells with CSB-PA001255LA01HU at 1:100, counter-stained with DAPI. The cells were fixed in 4% formaldehyde, permeabilized using 0.2% Triton X-100 and blocked in 10% normal Goat Serum. The cells were then incubated with the antibody overnight at 4°C. The secondary antibody was Alexa Fluor 488-conjugated AffiniPure Goat Anti-Rabbit IgG (H+L).

Usage

For Research Use Only. Not for use in diagnostic or therapeutic procedures.