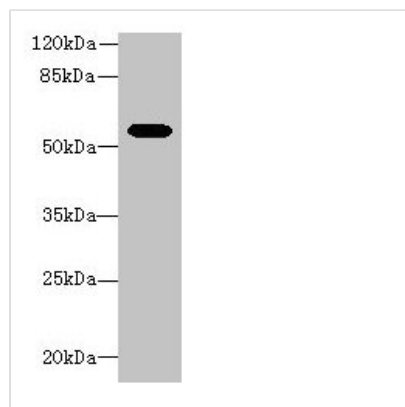




# Aldh1a1 Antibody

<b>Product Code</b>	CSB-PA001565LA01MO
<b>Storage</b>	Upon receipt, store at -20°C or -80°C. Avoid repeated freeze.
<b>Uniprot No.</b>	P24549
<b>Immunogen</b>	Recombinant Mouse Retinal dehydrogenase 1 protein (2-501AA)
<b>Raised In</b>	Rabbit
<b>Species Reactivity</b>	Mouse
<b>Tested Applications</b>	ELISA, WB; Recommended dilution: WB:1:500-1:2000
<b>Form</b>	Liquid
<b>Conjugate</b>	Non-conjugated
<b>Storage Buffer</b>	Preservative: 0.03% Proclin 300 Constituents: 50% Glycerol, 0.01M PBS, PH 7.4
<b>Purification Method</b>	>95%, Protein G purified
<b>Isotype</b>	IgG
<b>Clonality</b>	Polyclonal
<b>Alias</b>	Retinal dehydrogenase 1 (RALDH 1) (RaLDH1) (EC 1.2.1.-) (EC 1.2.1.36) (ALDH-E1) (ALHDII) (Aldehyde dehydrogenase family 1 member A1) (Aldehyde dehydrogenase, cytosolic), Aldh1a1, Ahd-2 Ahd2 Aldh1
<b>Immunogen Species</b>	Mus musculus (Mouse)
<b>Research Area</b>	Neuroscience
<b>Target Names</b>	Aldh1a1

## Image



Western blot  
All lanes: Aldh1a1 antibody at 8µg/ml + Mouse eye tissue  
Secondary  
Goat polyclonal to rabbit IgG at 1/10000 dilution  
Predicted band size: 55 kDa  
Observed band size: 55 kDa