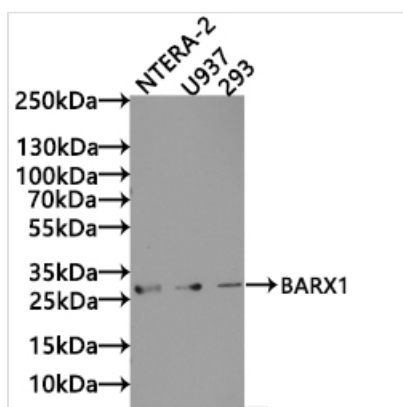




BARX1 Antibody

Product Code	CSB-PA888023LA01HU
Storage	Upon receipt, store at -20°C or -80°C. Avoid repeated freeze.
Uniprot No.	Q9HBU1
Immunogen	Synthesized peptide derived from human BARX1 AA range: 159-209
Raised In	Rabbit
Species Reactivity	Human
Tested Applications	ELISA, WB; Recommended dilution: WB:1:500-1:2000
Form	Liquid
Storage Buffer	Liquid in PBS containing 50% glycerol, 0.5% BSA and 0.02% sodium azide.
Purification Method	Antigen affinity purification
Isotype	IgG
Clonality	Polyclonal
Product Type	Polyclonal Antibody
Immunogen Species	Homo sapiens (Human)
Research Area	Others
Target Names	BARX1

Image



Western Blot

Positive WB detected in: NTERA-2 whole cell lysate(20µg), U937 whole cell lysate(20µg), 293 whole cell lysate(20µg)

All lanes: BARX1 antibody at 1:1000

Secondary

Goat polyclonal to rabbit IgG at 1/40000 dilution

Predicted band size: 28,12 kDa

Observed band size: 28kDa

Exposure time: 300s

Usage

For Research Use Only. Not for use in diagnostic or therapeutic procedures.