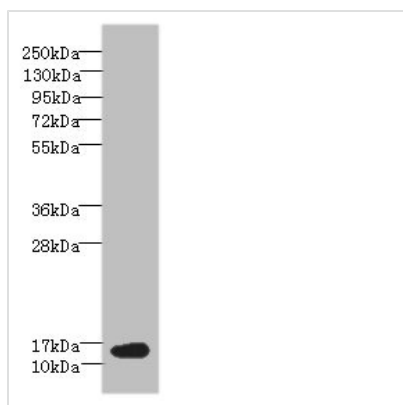




BATF Antibody

Product Code	CSB-PA619074LA01HU
Storage	Upon receipt, store at -20°C or -80°C. Avoid repeated freeze.
Uniprot No.	Q16520
Immunogen	Recombinant Human Basic leucine zipper transcriptional factor ATF-like protein (1-125AA)
Raised In	Rabbit
Species Reactivity	Human, Mouse
Tested Applications	ELISA, WB, IHC; Recommended dilution: WB:1:500-1:2000, IHC:1:20-1:200
Form	Liquid
Conjugate	Non-conjugated
Storage Buffer	Preservative: 0.03% Proclin 300 Constituents: 50% Glycerol, 0.01M PBS, PH 7.4
Purification Method	>95%, Protein G purified
Isotype	IgG
Clonality	Polyclonal
Alias	Basic leucine zipper transcriptional factor ATF-like (B-cell-activating transcription factor) (B-ATF) (SF-HT-activated gene 2 protein) (SFA-2), BATF
Immunogen Species	Homo sapiens (Human)
Research Area	Epigenetics and Nuclear Signaling
Target Names	BATF

Image



Western blot

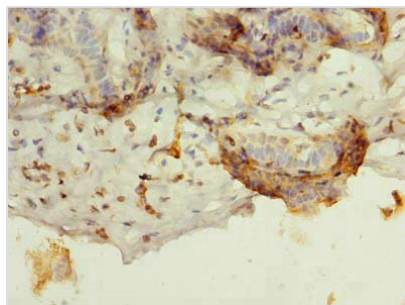
All lanes: BATF antibody at 6µg/ml + NIH/3T3 whole cell lysate

Secondary

Goat polyclonal to rabbit IgG at 1/10000 dilution

Predicted band size: 15 kDa

Observed band size: 15 kDa



Immunohistochemistry of paraffin-embedded human breast cancer using CSB-PA619074LA01HU at dilution of 1:100

Usage

For Research Use Only. Not for use in diagnostic or therapeutic procedures.