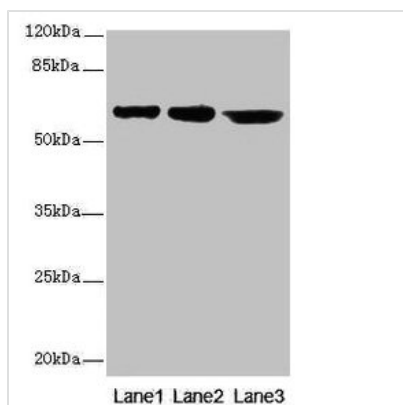




# CATSPER2 Antibody

<b>Product Code</b>	CSB-PA842731LA01HU
<b>Storage</b>	Upon receipt, store at -20°C or -80°C. Avoid repeated freeze.
<b>Uniprot No.</b>	Q96P56
<b>Immunogen</b>	Recombinant Human Cation channel sperm-associated protein 2 protein (5-112AA)
<b>Raised In</b>	Rabbit
<b>Species Reactivity</b>	Human
<b>Tested Applications</b>	ELISA, WB, IHC, IF; Recommended dilution: WB:1:500-1:2000, IHC:1:20-1:200, IF:1:50-1:200
<b>Form</b>	Liquid
<b>Conjugate</b>	Non-conjugated
<b>Storage Buffer</b>	Preservative: 0.03% Proclin 300 Constituents: 50% Glycerol, 0.01M PBS, PH 7.4
<b>Purification Method</b>	>95%, Protein G purified
<b>Isotype</b>	IgG
<b>Clonality</b>	Polyclonal
<b>Alias</b>	Cation channel sperm-associated protein 2 (CatSper2), CATSPER2
<b>Immunogen Species</b>	Homo sapiens (Human)
<b>Research Area</b>	Others
<b>Target Names</b>	CATSPER2

## Image



### Western blot

All lanes: CATSPER2 antibody at 4µg/ml

Lane 1: Jurkat whole cell lysate

Lane 2: HepG2 whole cell lysate

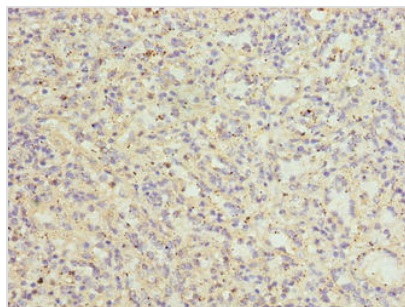
Lane 3: 293T whole cell lysate

Secondary

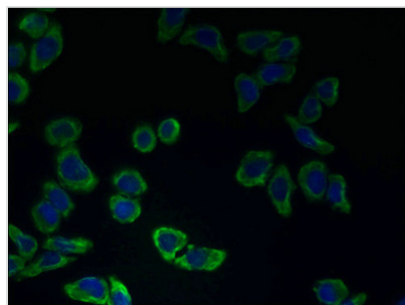
Goat polyclonal to rabbit IgG at 1/10000 dilution

Predicted band size: 63, 62, 49, 24 kDa

Observed band size: 63 kDa



Immunohistochemistry of paraffin-embedded human spleen tissue using CSB-PA842731LA01HU at dilution of 1:100



Immunofluorescent analysis of LO2 cells using CSB-PA842731LA01HU at dilution of 1:100 and Alexa Fluor 488-conjugated AffiniPure Goat Anti-Rabbit IgG(H+L)

## Usage

For Research Use Only. Not for use in diagnostic or therapeutic procedures.