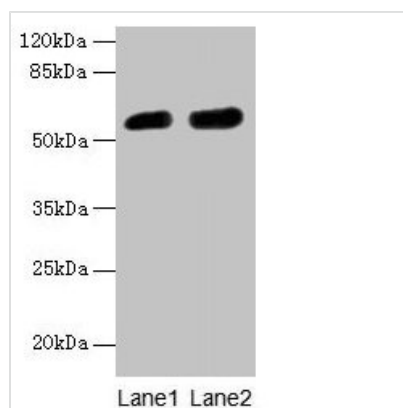




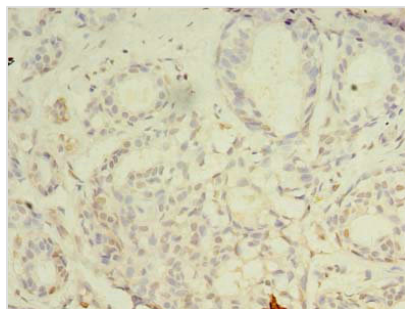
CBX2 Antibody

Product Code	CSB-PA613521LA01HU
Storage	Upon receipt, store at -20°C or -80°C. Avoid repeated freeze.
Uniprot No.	Q14781
Immunogen	Recombinant Human Chromobox protein homolog 2 protein (1-211AA)
Raised In	Rabbit
Species Reactivity	Human, Mouse
Tested Applications	ELISA, WB, IHC; Recommended dilution: WB:1:500-1:2000, IHC:1:20-1:200
Form	Liquid
Conjugate	Non-conjugated
Storage Buffer	Preservative: 0.03% Proclin 300 Constituents: 50% Glycerol, 0.01M PBS, PH 7.4
Purification Method	>95%, Protein G purified
Isotype	IgG
Clonality	Polyclonal
Alias	Chromobox protein homolog 2, CBX2
Immunogen Species	Homo sapiens (Human)
Research Area	Epigenetics and Nuclear Signaling
Target Names	CBX2

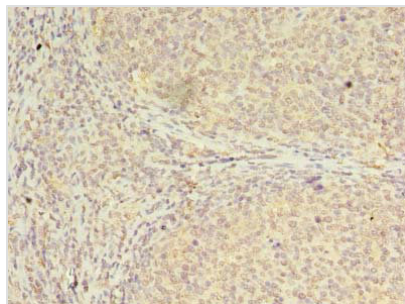
Image



Western blot
 All lanes: CBX2 antibody at 6µg/ml
 Lane 1: A431 whole cell lysate
 Lane 2: Mouse heart tissue
 Secondary
 Goat polyclonal to rabbit IgG at 1/10000 dilution
 Predicted band size: 57, 24 kDa
 Observed band size: 57 kDa



Immunohistochemistry of paraffin-embedded human breast cancer using CSB-PA613521LA01HU at dilution of 1:100



Immunohistochemistry of paraffin-embedded human tonsil tissue using CSB-PA613521LA01HU at dilution of 1:100