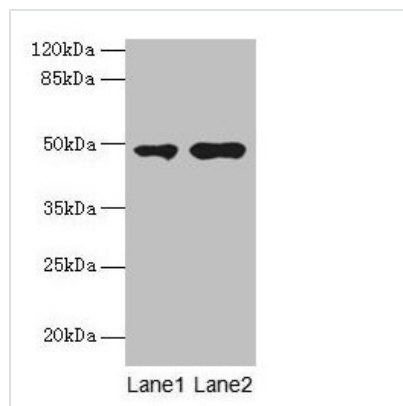




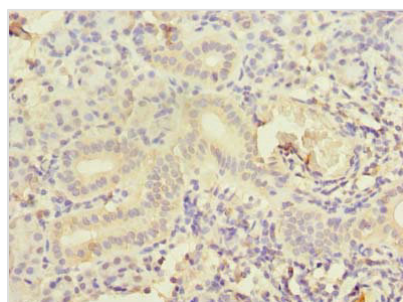
CCNJL Antibody

Product Code	CSB-PA004826LA01HU
Storage	Upon receipt, store at -20°C or -80°C. Avoid repeated freeze.
Uniprot No.	Q8IV13
Immunogen	Recombinant Human Cyclin-J-like protein (315-435AA)
Raised In	Rabbit
Species Reactivity	Human, Mouse
Tested Applications	ELISA, WB, IHC; Recommended dilution: WB:1:500-1:2000, IHC:1:20-1:200
Form	Liquid
Conjugate	Non-conjugated
Storage Buffer	Preservative: 0.03% Proclin 300 Constituents: 50% Glycerol, 0.01M PBS, PH 7.4
Purification Method	>95%, Protein G purified
Isotype	IgG
Clonality	Polyclonal
Alias	Cyclin-J-like protein, CCNJL
Immunogen Species	Homo sapiens (Human)
Research Area	Cell Biology
Target Names	CCNJL

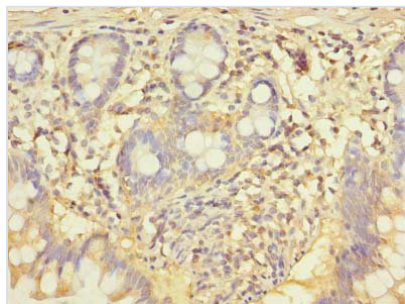
Image



Western blot
 All lanes: CCNJL antibody at 3µg/ml
 Lane 1: U251 whole cell lysate
 Lane 2: Mouse liver tissue
 Secondary
 Goat polyclonal to rabbit IgG at 1/10000 dilution
 Predicted band size: 49, 19 kDa
 Observed band size: 49 kDa



Immunohistochemistry of paraffin-embedded human pancreatic tissue using CSB-PA004826LA01HU at dilution of 1:100



Immunohistochemistry of paraffin-embedded human small intestine tissue using CSB-PA004826LA01HU at dilution of 1:100

Usage

For Research Use Only. Not for use in diagnostic or therapeutic procedures.