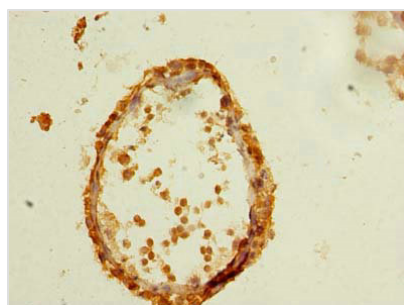




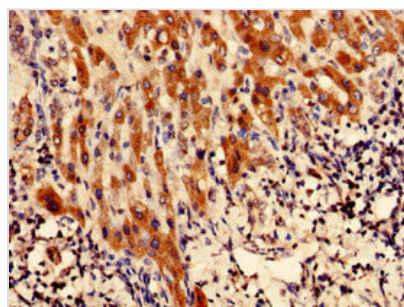
# CFAP61 Antibody

|                            |  |
|----------------------------|--|
| <b>Product Code</b>        | CSB-PA850915LA01HU   |
| <b>Storage</b>             | Upon receipt, store at -20°C or -80°C. Avoid repeated freeze.                    |
| <b>Uniprot No.</b>         | Q8NHU2   |
| <b>Immunogen</b>           | Recombinant Human Cilia- and flagella-associated protein 61 protein (1-200AA)    |
| <b>Raised In</b>           | Rabbit   |
| <b>Species Reactivity</b>  | Human  |
| <b>Tested Applications</b> | ELISA, IHC; Recommended dilution: IHC:1:20-1:200                                 |
| <b>Form</b>                | Liquid   |
| <b>Conjugate</b>           | Non-conjugated   |
| <b>Storage Buffer</b>      | Preservative: 0.03% Proclin 300<br>Constituents: 50% Glycerol, 0.01M PBS, PH 7.4 |
| <b>Purification Method</b> | >95%, Protein G purified   |
| <b>Isotype</b>             | IgG  |
| <b>Clonality</b>           | Polyclonal   |
| <b>Alias</b>               | Cilia- and flagella-associated protein 61, CFAP61, C20orf26                      |
| <b>Immunogen Species</b>   | Homo sapiens (Human)   |
| <b>Research Area</b>       | Cell Biology   |
| <b>Target Names</b>        | CFAP61   |

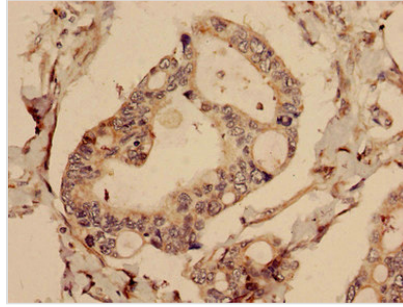
## Image



Immunohistochemistry of paraffin-embedded human testis tissue using CSB-PA850915LA01HU at dilution of 1:100



Immunohistochemistry analysis of human liver cancer using CSB-PA850915LA01HU at dilution of 1:100



Immunohistochemistry analysis of human pancreatic cancer using CSB-PA850915LA01HU at dilution of 1:100

---

**Usage**

For Research Use Only. Not for use in diagnostic or therapeutic procedures.