



CHID1 Antibody

Product Code	CSB-PA883614LA01HU
Storage	Upon receipt, store at -20°C or -80°C. Avoid repeated freeze.
Uniprot No.	Q9BWS9
Immunogen	Recombinant Human Chitinase domain-containing protein 1 protein (20-393AA)
Raised In	Rabbit
Species Reactivity	Human
Tested Applications	ELISA, WB, IHC; Recommended dilution: WB:1:500-1:5000, IHC:1:20-1:200
Form	Liquid
Conjugate	Non-conjugated
Storage Buffer	Preservative: 0.03% Proclin 300 Constituents: 50% Glycerol, 0.01M PBS, PH 7.4
Purification Method	>95%, Protein G purified
Isotype	IgG
Clonality	Polyclonal
Alias	Chitinase domain-containing protein 1 (Stabilin-1-interacting chitinase-like protein) (SI-CLP), CHID1
Immunogen Species	Homo sapiens (Human)
Research Area	Immunology
Target Names	CHID1

Image



Western blot

All lanes: CHID1 antibody at 0.2µg/ml

Lane 1: Hela whole cell lysate

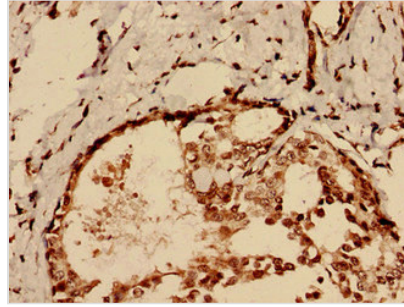
Lane 2: U251 whole cell lysate

Secondary

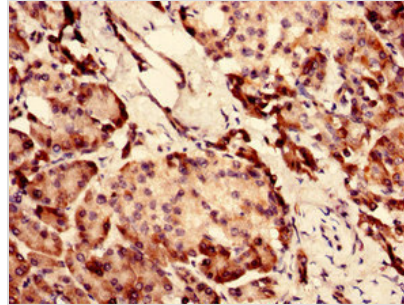
Goat polyclonal to rabbit IgG at 1/10000 dilution

Predicted band size: 45, 48, 42 kDa

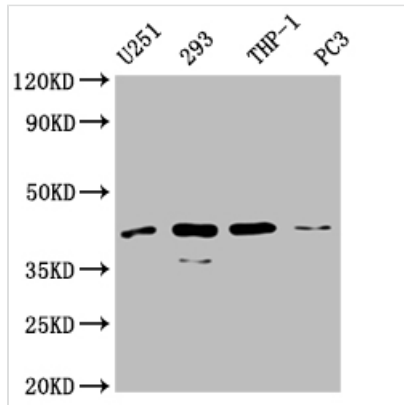
Observed band size: 45 kDa



Immunohistochemistry analysis of human breast cancer using CSB-PA883614LA01HU at dilution of 1:100



Immunohistochemistry analysis of human pancreatic tissue using CSB-PA883614LA01HU at dilution of 1:100



Western Blot

Positive WB detected in: U251 whole cell lysate, 293 whole cell lysate, THP-1 whole cell lysate, PC-3 whole cell lysate

All lanes: CHID1 antibody at 1:2000

Secondary

Goat polyclonal to rabbit IgG at 1/50000 dilution

Predicted band size: 45, 48, 42 kDa

Observed band size: 45 kDa

Usage

For Research Use Only. Not for use in diagnostic or therapeutic procedures.