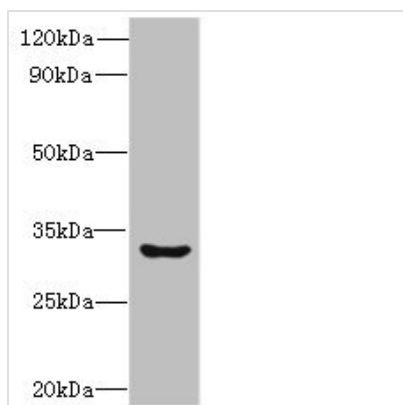




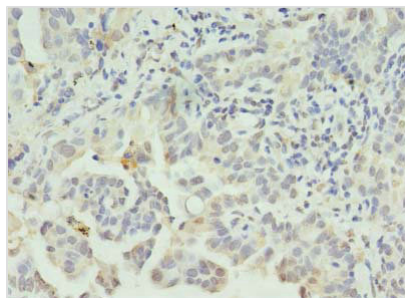
# CLEC1A Antibody

<b>Product Code</b>	CSB-PA843319LA01HU
<b>Storage</b>	Upon receipt, store at -20°C or -80°C. Avoid repeated freeze.
<b>Uniprot No.</b>	Q8NC01
<b>Immunogen</b>	Recombinant Human C-type lectin domain family 1 member A protein (74-280AA)
<b>Raised In</b>	Rabbit
<b>Species Reactivity</b>	Human, Mouse
<b>Tested Applications</b>	ELISA, WB, IHC; Recommended dilution: WB:1:500-1:2000, IHC:1:20-1:200
<b>Form</b>	Liquid
<b>Conjugate</b>	Non-conjugated
<b>Storage Buffer</b>	Preservative: 0.03% Proclin 300 Constituents: 50% Glycerol, 0.01M PBS, PH 7.4
<b>Purification Method</b>	>95%, Protein G purified
<b>Isotype</b>	IgG
<b>Clonality</b>	Polyclonal
<b>Alias</b>	C-type lectin domain family 1 member A (C-type lectin-like receptor 1) (CLEC-1), CLEC1A, CLEC1
<b>Immunogen Species</b>	Homo sapiens (Human)
<b>Research Area</b>	Others
<b>Target Names</b>	CLEC1A

## Image



Western blot  
 All lanes: CLEC1A antibody at 6µg/ml + Mouse thymus tissue  
 Secondary  
 Goat polyclonal to rabbit IgG at 1/10000 dilution  
 Predicted band size: 32 kDa  
 Observed band size: 32 kDa



Immunohistochemistry of paraffin-embedded human lung cancer using CSB-PA843319LA01HU at dilution of 1:100

---

**Usage**

For Research Use Only. Not for use in diagnostic or therapeutic procedures.