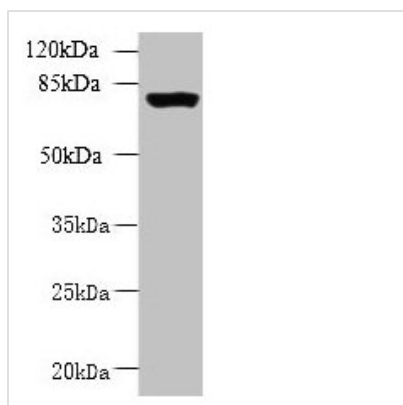




CLPB Antibody

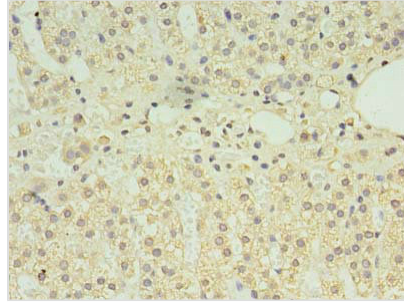
Product Code	CSB-PA884428LA01HU
Storage	Upon receipt, store at -20°C or -80°C. Avoid repeated freeze.
Uniprot No.	Q9H078
Immunogen	Recombinant Human Caseinolytic peptidase B protein homolog protein (1-350AA)
Raised In	Rabbit
Species Reactivity	Human
Tested Applications	ELISA, WB, IHC; Recommended dilution: WB:1:500-1:2000, IHC:1:20-1:200
Form	Liquid
Conjugate	Non-conjugated
Storage Buffer	Preservative: 0.03% Proclin 300 Constituents: 50% Glycerol, 0.01M PBS, PH 7.4
Purification Method	>95%, Protein G purified
Isotype	IgG
Clonality	Polyclonal
Alias	Caseinolytic peptidase B protein homolog (EC 3.6.1.3) (Suppressor of potassium transport defect 3), CLPB, HSP78 SKD3
Immunogen Species	Homo sapiens (Human)
Research Area	Signal Transduction
Target Names	CLPB

Image



Western blot

All lanes: CLPB antibody at 5µg/ml + 293T whole cell lysate
 Secondary
 Goat polyclonal to rabbit IgG at 1/10000 dilution
 Predicted band size: 79, 76, 73, 75, 58 kDa
 Observed band size: 79 kDa



Immunohistochemistry of paraffin-embedded human adrenal gland tissue using CSB-PA884428LA01HU at dilution of 1:100

Usage

For Research Use Only. Not for use in diagnostic or therapeutic procedures.