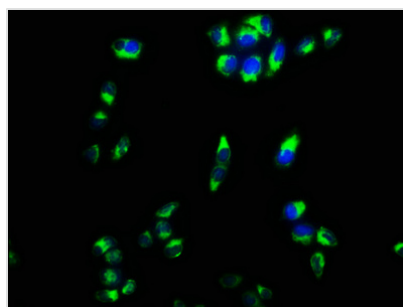




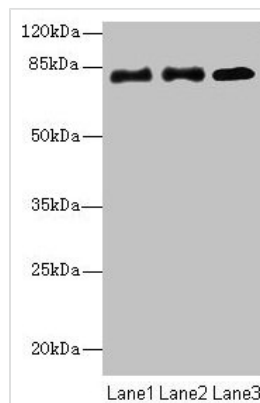
CPEB4 Antibody

Product Code	CSB-PA618177LA01HU
Storage	Upon receipt, store at -20°C or -80°C. Avoid repeated freeze.
Uniprot No.	Q17RY0
Immunogen	Recombinant Human Cytoplasmic polyadenylation element-binding protein 4 protein (244-515AA)
Raised In	Rabbit
Species Reactivity	Human
Tested Applications	ELISA, WB, IF; Recommended dilution: WB:1:1000-1:5000, IF:1:50-1:200
Form	Liquid
Conjugate	Non-conjugated
Storage Buffer	Preservative: 0.03% Proclin 300 Constituents: 50% Glycerol, 0.01M PBS, PH 7.4
Purification Method	>95%, Protein G purified
Isotype	IgG
Clonality	Polyclonal
Alias	Cytoplasmic polyadenylation element-binding protein 4 (CPE-BP4) (CPE-binding protein 4) (hCPEB-4), CPEB4, KIAA1673
Immunogen Species	Homo sapiens (Human)
Research Area	Epigenetics and Nuclear Signaling
Target Names	CPEB4

Image



Immunofluorescence staining of HeLa cells with CSB-PA618177LA01HU at 1:133, counter-stained with DAPI. The cells were fixed in 4% formaldehyde, permeabilized using 0.2% Triton X-100 and blocked in 10% normal Goat Serum. The cells were then incubated with the antibody overnight at 4°C. The secondary antibody was Alexa Fluor 488-conjugated AffiniPure Goat Anti-Rabbit IgG(H+L).



Western blot

All lanes: CPEB4 antibody at 2 μ g/ml

Lane 1: Hela whole cell lysate

Lane 2: 293T whole cell lysate

Lane 3: U87 whole cell lysate

Secondary

Goat polyclonal to rabbit IgG at 1/10000 dilution

Predicted band size: 81, 79, 37 kDa

Observed band size: 81 kDa