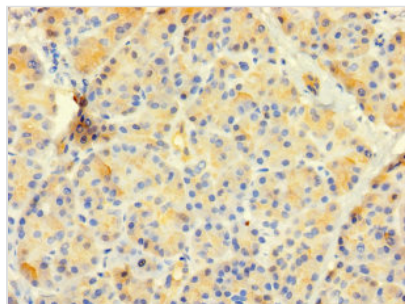




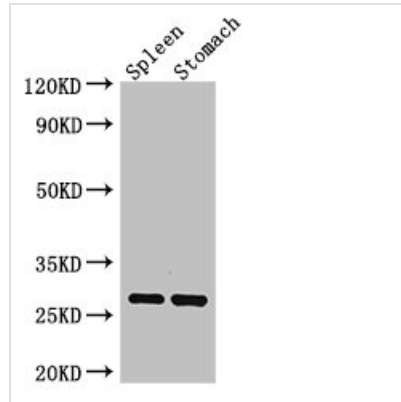
CTRB1 Antibody

Product Code	CSB-PA324640LA01HU
Storage	Upon receipt, store at -20°C or -80°C. Avoid repeated freeze.
Uniprot No.	P17538
Immunogen	Recombinant Human Chymotrypsinogen B protein (19-263AA)
Raised In	Rabbit
Species Reactivity	Human, Mouse
Tested Applications	ELISA, WB, IHC; Recommended dilution: WB:1:500-1:5000, IHC:1:20-1:200
Form	Liquid
Conjugate	Non-conjugated
Storage Buffer	Preservative: 0.03% Proclin 300 Constituents: 50% Glycerol, 0.01M PBS, PH 7.4
Purification Method	>95%, Protein G purified
Isotype	IgG
Clonality	Polyclonal
Alias	Chymotrypsinogen B (EC 3.4.21.1) [Cleaved into: Chymotrypsin B chain A; Chymotrypsin B chain B; Chymotrypsin B chain C], CTRB1, CTRB
Immunogen Species	Homo sapiens (Human)
Research Area	Cell Biology
Target Names	CTRB1

Image



Immunohistochemistry of paraffin-embedded human pancreatic tissue using CSB-PA324640LA01HU at dilution of 1:100

**Western Blot**

Positive WB detected in: Mouse spleen tissue,
Mouse stomach tissue

All lanes: CTRB1 antibody at 3 μ g/ml

Secondary

Goat polyclonal to rabbit IgG at 1/50000 dilution

Predicted band size: 28 kDa

Observed band size: 28 kDa

Usage

For Research Use Only. Not for use in diagnostic or therapeutic procedures.