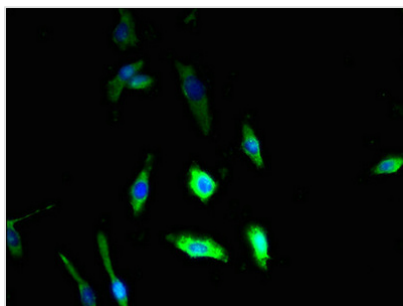




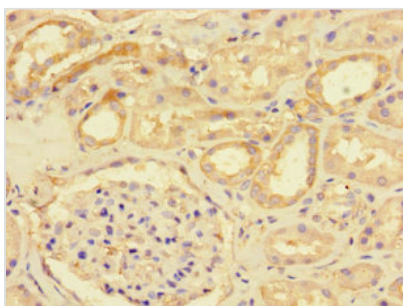
# DSE Antibody

|                            |  |
|----------------------------|--|
| <b>Product Code</b>        | CSB-PA890925LA01HU   |
| <b>Storage</b>             | Upon receipt, store at -20°C or -80°C. Avoid repeated freeze.  |
| <b>Uniprot No.</b>         | Q9UL01   |
| <b>Immunogen</b>           | Recombinant Human Dermatan-sulfate epimerase protein (23-270AA)  |
| <b>Raised In</b>           | Rabbit   |
| <b>Species Reactivity</b>  | Human  |
| <b>Tested Applications</b> | ELISA, IHC, IF; Recommended dilution: IHC:1:20-1:200, IF:1:50-1:200  |
| <b>Form</b>                | Liquid   |
| <b>Conjugate</b>           | Non-conjugated   |
| <b>Storage Buffer</b>      | Preservative: 0.03% Proclin 300<br>Constituents: 50% Glycerol, 0.01M PBS, PH 7.4   |
| <b>Purification Method</b> | >95%, Protein G purified   |
| <b>Isotype</b>             | IgG  |
| <b>Clonality</b>           | Polyclonal   |
| <b>Alias</b>               | Dermatan-sulfate epimerase (DS epimerase) (EC 5.1.3.19) (Chondroitin-glucuronate 5-epimerase) (Squamous cell carcinoma antigen recognized by T-cells 2) (SART-2), DSE, SART2 |
| <b>Immunogen Species</b>   | Homo sapiens (Human)   |
| <b>Research Area</b>       | Others   |
| <b>Target Names</b>        | DSE  |

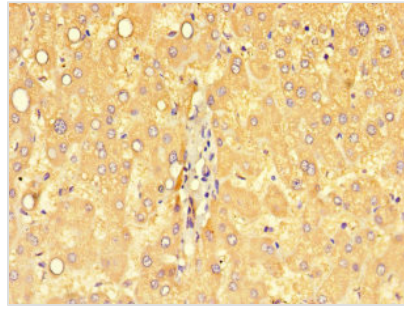
## Image



Immunofluorescent analysis of U251 cells using CSB-PA890925LA01HU at dilution of 1:100 and Alexa Fluor 488-conjugated AffiniPure Goat Anti-Rabbit IgG(H+L)



Immunohistochemistry of paraffin-embedded human kidney tissue using CSB-PA890925LA01HU at dilution of 1:100



Immunohistochemistry of paraffin-embedded human liver cancer using CSB-PA890925LA01HU at dilution of 1:100

---

**Usage**

For Research Use Only. Not for use in diagnostic or therapeutic procedures.