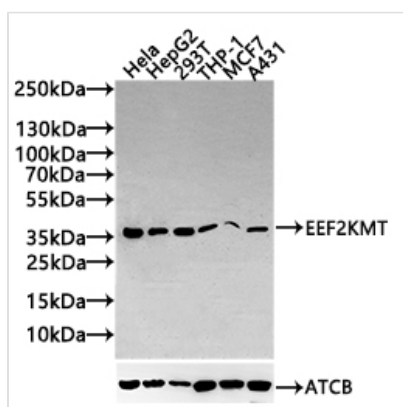




EEF2KMT Antibody

Product Code	CSB-PA853420LA01HU
Storage	Upon receipt, store at -20°C or -80°C. Avoid repeated freeze.
Uniprot No.	Q96G04
Immunogen	Synthesized peptide derived from human FA86A
Raised In	Rabbit
Species Reactivity	Human
Tested Applications	ELISA, WB, IHC; Recommended dilution: WB:1:1000-1:3000, IHC:1:100-1:300
Form	Liquid
Storage Buffer	Liquid in PBS containing 50% glycerol, 0.5% BSA and 0.02% sodium azide.
Purification Method	Antigen affinity purification
Isotype	IgG
Clonality	Polyclonal
Product Type	Polyclonal Antibody
Immunogen Species	Homo sapiens (Human)
Research Area	Others
Target Names	EEF2KMT

Image



Western Blot

Positive WB detected in: HeLa whole cell lysate(20µg), HepG2 whole cell lysate(20µg), 293T whole cell lysate(20µg), THP-1 whole cell lysate(20µg), MCF7 whole cell lysate(20µg), A431 whole cell lysate(20µg)

All lanes: EEF2KMT antibody at 1:1000

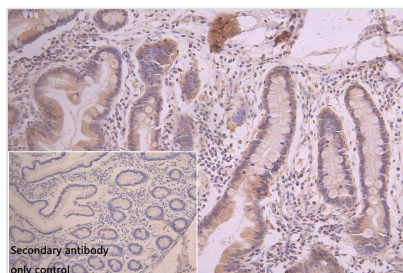
Secondary

Goat polyclonal to rabbit IgG at 1/20000 dilution

Predicted band size: 37, 34 kDa

Observed band size: 37 kDa

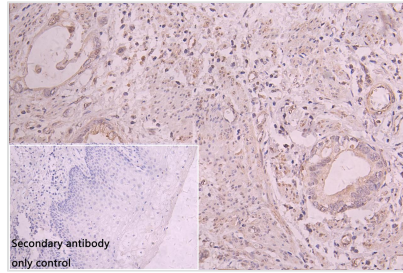
Exposure time: 60s



IHC image of CSB-PA853420LA01HU diluted at 1:100 and staining in paraffin-embedded human small intestine tissue performed on a Leica Bond™ system. After dewaxing and hydration, antigen retrieval was mediated by high pressure in a citrate buffer (pH 6.0). Section was blocked with 10% normal goat serum 30min at RT. Then primary antibody (1% BSA) was incubated at 4°C overnight. The primary is detected by a Goat anti-rabbit polymer IgG labeled by HRP and visualized using 0.05% DAB. Secondary antibody only control: uses 1% BSA instead of



primary antibody



IHC image of CSB-PA853420LA01HU diluted at 1:100 and staining in paraffin-embedded human cervical cancer performed on a Leica Bond™ system. After dewaxing and hydration, antigen retrieval was mediated by high pressure in a citrate buffer (pH 6.0). Section was blocked with 10% normal goat serum 30min at RT. Then primary antibody (1% BSA) was incubated at 4°C overnight. The primary is detected by a Goat anti-rabbit polymer IgG labeled by HRP and visualized using 0.05% DAB. Secondary antibody only control: uses 1% BSA instead of primary antibody

Usage

For Research Use Only. Not for use in diagnostic or therapeutic procedures.