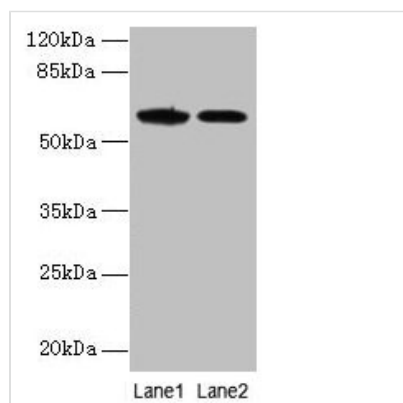




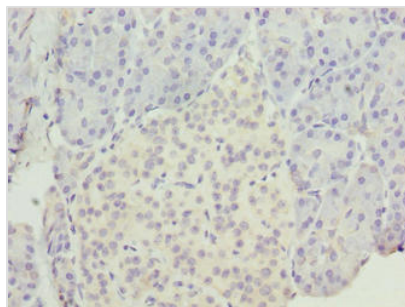
EGFL6 Antibody

Product Code	CSB-PA811602LA01HU
Storage	Upon receipt, store at -20°C or -80°C. Avoid repeated freeze.
Uniprot No.	Q8IUX8
Immunogen	Recombinant Human Epidermal growth factor-like protein 6 protein (301-554AA)
Raised In	Rabbit
Species Reactivity	Human
Tested Applications	ELISA, WB, IHC; Recommended dilution: WB:1:500-1:2000, IHC:1:20-1:200
Form	Liquid
Conjugate	Non-conjugated
Storage Buffer	Preservative: 0.03% Proclin 300 Constituents: 50% Glycerol, 0.01M PBS, PH 7.4
Purification Method	>95%, Protein G purified
Isotype	IgG
Clonality	Polyclonal
Alias	Epidermal growth factor-like protein 6 (EGF-like protein 6) (MAM and EGF domains-containing gene protein), EGFL6, MAEG
Immunogen Species	Homo sapiens (Human)
Research Area	Signal Transduction
Target Names	EGFL6

Image



Western blot
 All lanes: EGFL6 antibody at 6µg/ml
 Lane 1: K562 whole cell lysate
 Lane 2: Jurkat whole cell lysate
 Secondary
 Goat polyclonal to rabbit IgG at 1/10000 dilution
 Predicted band size: 62 kDa
 Observed band size: 62 kDa



Immunohistochemistry of paraffin-embedded human pancreatic tissue using CSB-PA811602LA01HU at dilution of 1:100

Usage

For Research Use Only. Not for use in diagnostic or therapeutic procedures.