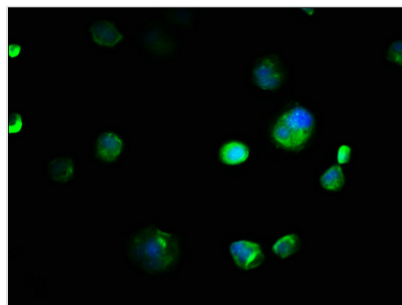




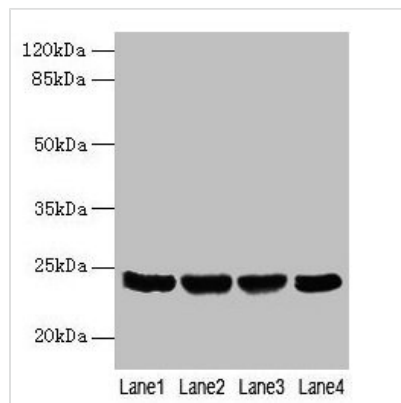
EMC8 Antibody

Product Code	CSB-PA005835LA01HU
Storage	Upon receipt, store at -20°C or -80°C. Avoid repeated freeze.
Uniprot No.	O43402
Immunogen	Recombinant Human ER membrane protein complex subunit 8 protein (1-210AA)
Raised In	Rabbit
Species Reactivity	Human
Tested Applications	ELISA, WB, IHC, IF; Recommended dilution: WB:1:500-1:5000, IHC:1:20-1:200, IF:1:50-1:200
Form	Liquid
Conjugate	Non-conjugated
Storage Buffer	Preservative: 0.03% Proclin 300 Constituents: 50% Glycerol, 0.01M PBS, PH 7.4
Purification Method	>95%, Protein G purified
Isotype	IgG
Clonality	Polyclonal
Alias	ER membrane protein complex subunit 8 (Neighbor of COX4) (Protein FAM158B), EMC8, C16orf2 C16orf4 COX4AL COX4NB FAM158B NOC4
Immunogen Species	Homo sapiens (Human)
Research Area	Cell Biology
Target Names	EMC8

Image



Immunofluorescence staining of MCF-7 cells with CSB-PA005835LA01HU at 1:133, counter-stained with DAPI. The cells were fixed in 4% formaldehyde, permeabilized using 0.2% Triton X-100 and blocked in 10% normal Goat Serum. The cells were then incubated with the antibody overnight at 4°C. The secondary antibody was Alexa Fluor 488-conjugated AffiniPure Goat Anti-Rabbit IgG(H+L).



Western blot

All lanes: EMC8 antibody at 4 μ g/ml

Lane 1: A549 whole cell lysate

Lane 2: Human placenta tissue

Lane 3: Hela whole cell lysate

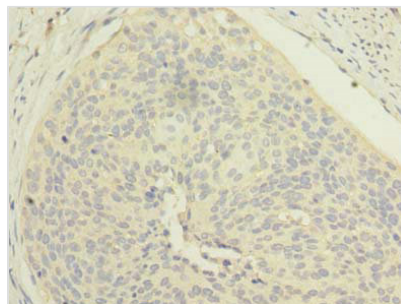
Lane 4: HT29 whole cell lysate

Secondary

Goat polyclonal to rabbit IgG at 1/10000 dilution

Predicted band size: 24, 14 kDa

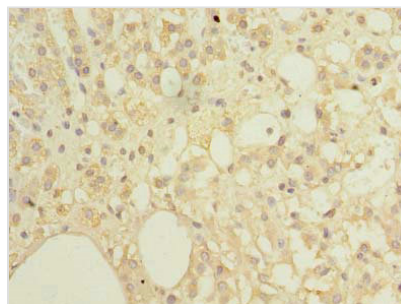
Observed band size: 24 kDa



Immunohistochemistry of paraffin-embedded

human cervical cancer using CSB-

PA005835LA01HU at dilution of 1:100



Immunohistochemistry of paraffin-embedded

human adrenal gland tissue using CSB-

PA005835LA01HU at dilution of 1:100