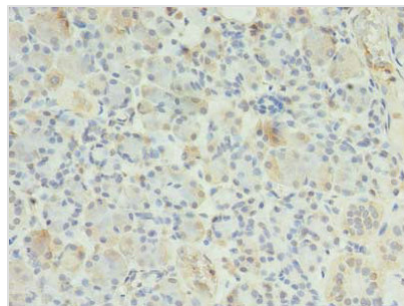




ERP27 Antibody

Product Code	CSB-PA842657LA01HU
Storage	Upon receipt, store at -20°C or -80°C. Avoid repeated freeze.
Uniprot No.	Q96DN0
Immunogen	Recombinant Human Endoplasmic reticulum resident protein 27 protein (26-273AA)
Raised In	Rabbit
Species Reactivity	Human
Tested Applications	ELISA, IHC; Recommended dilution: IHC:1:20-1:200
Form	Liquid
Conjugate	Non-conjugated
Storage Buffer	Preservative: 0.03% Proclin 300 Constituents: 50% Glycerol, 0.01M PBS, PH 7.4
Purification Method	>95%, Protein G purified
Isotype	IgG
Clonality	Polyclonal
Alias	Endoplasmic reticulum resident protein 27 (ER protein 27) (ERp27), ERP27, C12orf46
Immunogen Species	Homo sapiens (Human)
Research Area	Signal Transduction
Target Names	ERP27

Image



Immunohistochemistry of paraffin-embedded human pancreatic tissue using CSB-PA842657LA01HU at dilution of 1:100

Usage

For Research Use Only. Not for use in diagnostic or therapeutic procedures.