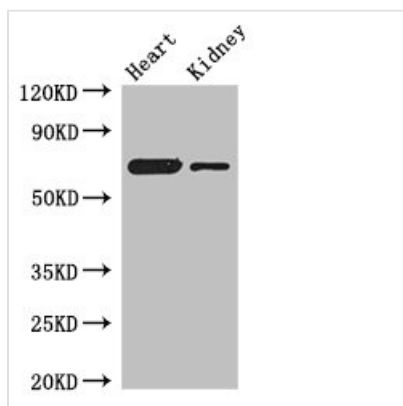




ETFDH Antibody

Product Code	CSB-PA619056LA01HU
Storage	Upon receipt, store at -20°C or -80°C. Avoid repeated freeze.
Uniprot No.	Q16134
Immunogen	Recombinant Human Electron transfer flavoprotein-ubiquinone oxidoreductase, mitochondrial protein (34-617AA)
Raised In	Rabbit
Species Reactivity	Human, Mouse
Tested Applications	ELISA, WB, IHC; Recommended dilution: WB:1:500-1:5000, IHC:1:20-1:200
Form	Liquid
Conjugate	Non-conjugated
Storage Buffer	Preservative: 0.03% Proclin 300 Constituents: 50% Glycerol, 0.01M PBS, PH 7.4
Purification Method	>95%, Protein G purified
Isotype	IgG
Clonality	Polyclonal
Alias	Electron transfer flavoprotein-ubiquinone oxidoreductase, mitochondrial (ETF-QO) (ETF-ubiquinone oxidoreductase) (EC 1.5.5.1) (Electron-transferring-flavoprotein dehydrogenase) (ETF dehydrogenase), ETFDH
Immunogen Species	Homo sapiens (Human)
Research Area	Tags & Cell Markers
Target Names	ETFDH

Image



Western Blot

Positive WB detected in: Mouse heart tissue, Mouse kidney tissue

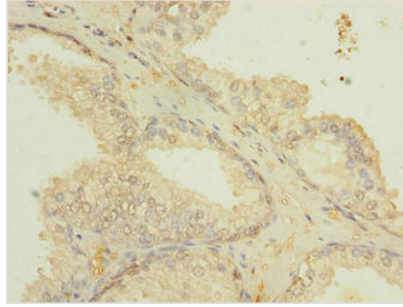
All lanes: ETFDH antibody at 3µg/ml

Secondary

Goat polyclonal to rabbit IgG at 1/50000 dilution

Predicted band size: 69, 63 kDa

Observed band size: 69 kDa



Immunohistochemistry of paraffin-embedded human prostate cancer using CSB-PA619056LA01HU at dilution of 1:100

Usage

For Research Use Only. Not for use in diagnostic or therapeutic procedures.