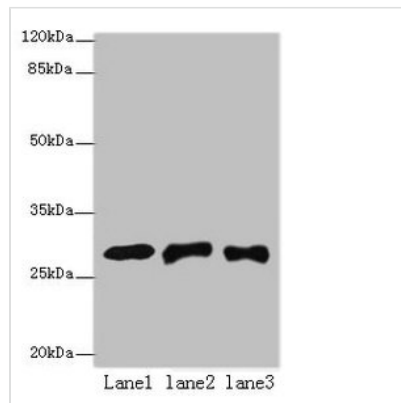




ETHE1 Antibody

| | |
|----------------------------|-------------------------------------------------------------------------------------------------------------------------------------------------------------------------------------|
| Product Code | CSB-PA007847HA01HU |
| Storage | Upon receipt, store at -20°C or -80°C. Avoid repeated freeze. |
| Uniprot No. | O95571 |
| Immunogen | Recombinant Human Persulfide dioxygenase ETHE1, mitochondrial protein (8-254AA) |
| Raised In | Rabbit |
| Species Reactivity | Human, Mouse |
| Tested Applications | ELISA, WB, IHC; Recommended dilution: WB:1:500-1:2000, IHC:1:20-1:200 |
| Form | Liquid |
| Conjugate | Non-conjugated |
| Storage Buffer | Preservative: 0.03% Proclin 300 Constituents: 50% Glycerol, 0.01M PBS, PH 7.4 |
| Purification Method | >95%, Protein G purified |
| Isotype | IgG |
| Clonality | Polyclonal |
| Alias | Persulfide dioxygenase ETHE1, mitochondrial (EC 1.13.11.18) (Ethylmalonic encephalopathy protein 1) (Hepatoma subtracted clone one protein) (Sulfur dioxygenase ETHE1), ETHE1, HSCO |
| Immunogen Species | Homo sapiens (Human) |
| Research Area | Cell Biology |
| Target Names | ETHE1 |

Image



Western blot

All lanes: ETHE1 antibody at 8µg/ml

Lane 1: Mouse liver tissue

Lane 2: HepG2 whole cell lysate

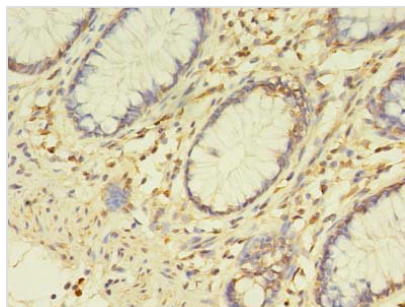
Lane 3: Hela whole cell lysate

Secondary

Goat polyclonal to rabbit IgG at 1/10000 dilution

Predicted band size: 28 kDa

Observed band size: 28 kDa



Immunohistochemistry of paraffin-embedded human colon cancer using CSB-PA007847HA01HU at dilution of 1:100

Usage

For Research Use Only. Not for use in diagnostic or therapeutic procedures.