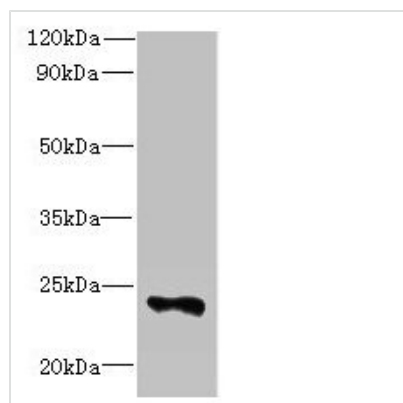




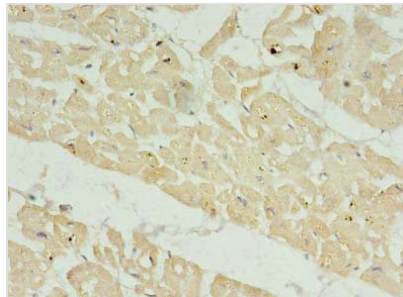
FAM156A Antibody

Product Code	CSB-PA847690LA01HU
Storage	Upon receipt, store at -20°C or -80°C. Avoid repeated freeze.
Uniprot No.	Q8NDB6
Immunogen	Recombinant Human Protein FAM156A/FAM156B protein (1-153AA)
Raised In	Rabbit
Species Reactivity	Human, Mouse
Tested Applications	ELISA, WB, IHC, IF; Recommended dilution: WB:1:500-1:2000, IHC:1:20-1:200, IF:1:50-1:200
Form	Liquid
Conjugate	Non-conjugated
Storage Buffer	Preservative: 0.03% Proclin 300 Constituents: 50% Glycerol, 0.01M PBS, PH 7.4
Purification Method	>95%, Protein G purified
Isotype	IgG
Clonality	Polyclonal
Alias	Protein FAM156A/FAM156B (Transmembrane protein 29/29B), FAM156A; FAM156B, TMEM29; TMEM29B
Immunogen Species	Homo sapiens (Human)
Research Area	Cell Biology
Target Names	FAM156A

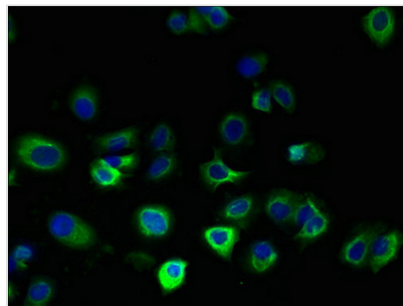
Image



Western blot
All lanes: FAM156A antibody at 5µg/ml + Mouse heart tissue
Secondary
Goat polyclonal to rabbit IgG at 1/10000 dilution
Predicted band size: 25 kDa
Observed band size: 25 kDa



Immunohistochemistry of paraffin-embedded human heart tissue using CSB-PA847690LA01HU at dilution of 1:100



Immunofluorescent analysis of MCF-7 cells using CSB-PA847690LA01HU at dilution of 1:100 and Alexa Fluor 488-conjugated AffiniPure Goat Anti-Rabbit IgG(H+L)