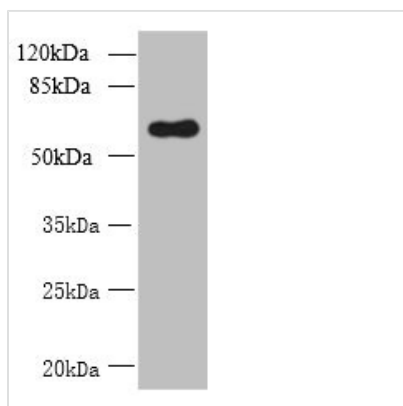




GDPD2 Antibody

Product Code	CSB-PA864028LA01HU
Storage	Upon receipt, store at -20°C or -80°C. Avoid repeated freeze.
Uniprot No.	Q9HCC8
Immunogen	Recombinant Human Glycerophosphoinositol inositolphosphodiesterase GDPD2 protein (210-490AA)
Raised In	Rabbit
Species Reactivity	Human
Tested Applications	ELISA, WB, IHC, IF; Recommended dilution: WB:1:500-1:2000, IHC:1:20-1:200, IF:1:50-1:200
Form	Liquid
Conjugate	Non-conjugated
Storage Buffer	Preservative: 0.03% Proclin 300 Constituents: 50% Glycerol, 0.01M PBS, PH 7.4
Purification Method	Antigen Affinity Purified
Isotype	IgG
Clonality	Polyclonal
Alias	Glycerophosphoinositol inositolphosphodiesterase GDPD2 (EC 3.1.4.43) (Glycerophosphodiester phosphodiesterase 3) (Glycerophosphodiester phosphodiesterase domain-containing protein 2) (Osteoblast differentiation promoting factor), GDPD2, GDE3 OBDPF
Immunogen Species	Homo sapiens (Human)
Research Area	Signal Transduction
Target Names	GDPD2

Image



Western blot

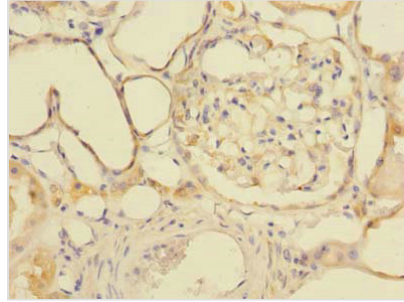
All lanes: GDPD2 antibody at 1.5µg/ml + A431 whole cell lysate

Secondary

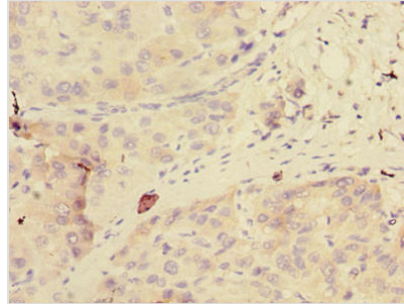
Goat polyclonal to rabbit IgG at 1/10000 dilution

Predicted band size: 62, 53, 67 kDa

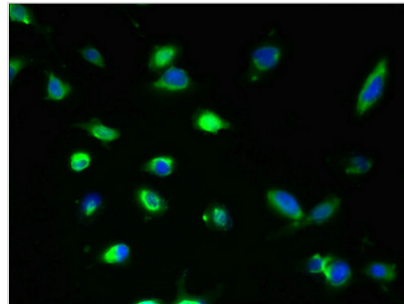
Observed band size: 62 kDa



Immunohistochemistry of paraffin-embedded human kidney tissue using CSB-PA864028LA01HU at dilution of 1:100



Immunohistochemistry of paraffin-embedded human liver cancer using CSB-PA864028LA01HU at dilution of 1:100



Immunofluorescent analysis of U251 cells using CSB-PA864028LA01HU at dilution of 1:100 and Alexa Fluor 488-conjugated AffiniPure Goat Anti-Rabbit IgG(H+L)

Usage

For Research Use Only. Not for use in diagnostic or therapeutic procedures.