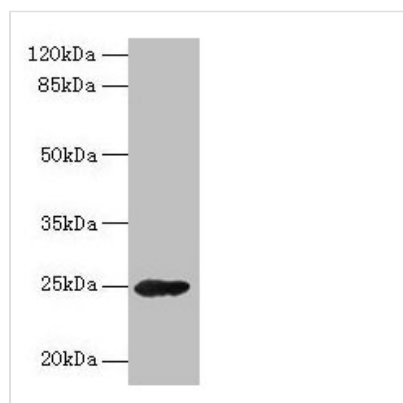




# GH2 Antibody

<b>Product Code</b>	CSB-PA009408LA01HU
<b>Storage</b>	Upon receipt, store at -20°C or -80°C. Avoid repeated freeze.
<b>Uniprot No.</b>	P01242
<b>Immunogen</b>	Recombinant Human Growth hormone variant protein (27-217AA)
<b>Raised In</b>	Rabbit
<b>Species Reactivity</b>	Human, Mouse
<b>Tested Applications</b>	ELISA, WB, IHC; Recommended dilution: WB:1:500-1:2000, IHC:1:20-1:200
<b>Form</b>	Liquid
<b>Conjugate</b>	Non-conjugated
<b>Storage Buffer</b>	Preservative: 0.03% Proclin 300 Constituents: 50% Glycerol, 0.01M PBS, PH 7.4
<b>Purification Method</b>	>95%, Protein G purified
<b>Isotype</b>	IgG
<b>Clonality</b>	Polyclonal
<b>Alias</b>	Growth hormone variant (GH-V) (Growth hormone 2) (Placenta-specific growth hormone), GH2
<b>Immunogen Species</b>	Homo sapiens (Human)
<b>Research Area</b>	Signal Transduction
<b>Target Names</b>	GH2

## Image



### Western blot

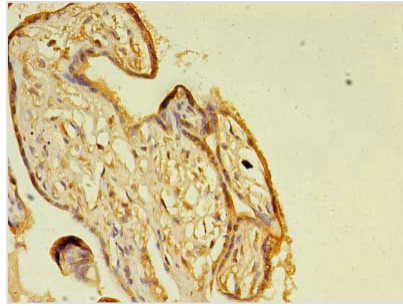
All lanes: GH2 antibody at 16µg/ml + Mouse skeletal muscle tissue

### Secondary

Goat polyclonal to rabbit IgG at 1/10000 dilution

Predicted band size: 25, 29, 24, 28 kDa

Observed band size: 25 kDa



Immunohistochemistry of paraffin-embedded human placenta tissue using CSB-PA009408LA01HU at dilution of 1:100