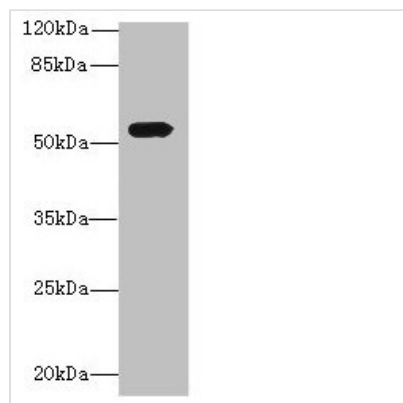




# ICA1L Antibody

<b>Product Code</b>	CSB-PA847691LA01HU
<b>Storage</b>	Upon receipt, store at -20°C or -80°C. Avoid repeated freeze.
<b>Uniprot No.</b>	Q8NDH6
<b>Immunogen</b>	Recombinant Human Islet cell autoantigen 1-like protein (1-187AA)
<b>Raised In</b>	Rabbit
<b>Species Reactivity</b>	Human
<b>Tested Applications</b>	ELISA, WB; Recommended dilution: WB:1:500-1:2000
<b>Form</b>	Liquid
<b>Conjugate</b>	Non-conjugated
<b>Storage Buffer</b>	Preservative: 0.03% Proclin 300 Constituents: 50% Glycerol, 0.01M PBS, PH 7.4
<b>Purification Method</b>	>95%, Protein G purified
<b>Isotype</b>	IgG
<b>Clonality</b>	Polyclonal
<b>Alias</b>	Islet cell autoantigen 1-like protein (Amyotrophic lateral sclerosis 2 chromosomal region candidate gene 14 protein) (Amyotrophic lateral sclerosis 2 chromosomal region candidate gene 15 protein), ICA1L, ALS2CR14 ALS2CR15
<b>Immunogen Species</b>	Homo sapiens (Human)
<b>Research Area</b>	Neuroscience
<b>Target Names</b>	ICA1L

## Image



Western blot  
All lanes: ICA1L antibody at 1.2µg/ml + MCF-7 whole cell lysate  
Secondary  
Goat polyclonal to rabbit at 1/10000 dilution  
Predicted band size: 55, 22 kDa  
Observed band size: 55 kDa