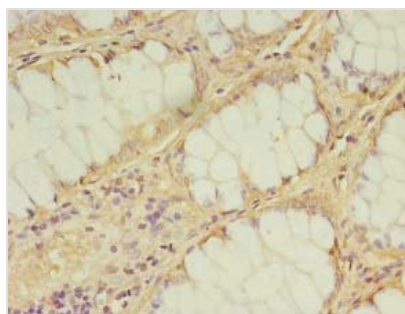




IDI2 Antibody

Product Code	CSB-PA871603LA01HU
Storage	Upon receipt, store at -20°C or -80°C. Avoid repeated freeze.
Uniprot No.	Q9BXS1
Immunogen	Recombinant Human Isopentenyl-diphosphate delta-isomerase 2 protein (1-227AA)
Raised In	Rabbit
Species Reactivity	Human
Tested Applications	ELISA, IHC; Recommended dilution: IHC:1:20-1:200
Form	Liquid
Conjugate	Non-conjugated
Storage Buffer	Preservative: 0.03% Proclin 300 Constituents: 50% Glycerol, 0.01M PBS, PH 7.4
Purification Method	>95%, Protein G purified
Isotype	IgG
Clonality	Polyclonal
Alias	Isopentenyl-diphosphate delta-isomerase 2 (EC 5.3.3.2) (Isopentenyl pyrophosphate isomerase 2) (IPP isomerase 2) (IPPI2), IDI2
Immunogen Species	Homo sapiens (Human)
Research Area	Cardiovascular
Target Names	IDI2

Image



Immunohistochemistry of paraffin-embedded human breast cancer using CSB-PA871603LA01HU at dilution of 1:100